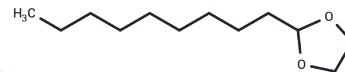


2-n-Nonyl-1,3-dioxolane

Chemical Properties

CAS No. :	4353-06-4
Formula:	C ₁₂ H ₂₄ O ₂
Molecular Weight:	200.32
Storage:	Powder: -20°C for 3 years In solvent: -80°C for 1 year Actual storage temperature shall be subject to the COA.



Biological Description

Description	2-n-Nonyl-1,3-dioxolane is a biochemical. It is used as an absorption and penetration enhancer on transdermal.
Targets(IC50)	Others

Preparing Stock Solutions

	1mg	5mg	10mg
1 mM	4.992 mL	24.9601 mL	49.9201 mL
5 mM	0.9984 mL	4.992 mL	9.984 mL
10 mM	0.4992 mL	2.496 mL	4.992 mL
50 mM	0.0998 mL	0.4992 mL	0.9984 mL

Please select the appropriate solvent to prepare the stock solution, according to the solubility of the product in different solvents. Please use it as soon as possible.

Note: The dilution table applies only to solid products. For liquid products, please calculate the stock solution based on the stated concentration and/or density.

Reference

- Sha M, Yin LF, Xu W, Chen YZ. [Effects of 2-n-nonyl-1,3-dioxolane as an enhancer on transdermal absorption of Salvia miltiorrhiza gel]. Zhongguo Zhong Yao Za Zhi. 2007 Mar;32(6):487-9. Chinese. PubMed PMID: 17552151.
- El Maghraby GM, Campbell M, Finin BC. Mechanisms of action of novel skin penetration enhancers: phospholipid versus skin lipid liposomes. Int J Pharm. 2005 Nov 23;305(1-2):90-104. Epub 2005 Sep 30. PubMed PMID: 16199131.
- Fuhrman J, Shafer L, Repertinger S, Chan T, Hansen LA. Mechanisms of SEPA 0009-induced tumorigenesis in v-rasHa transgenic Tg.AC mice. Toxicol Pathol. 2005;33(6):623-30. PubMed PMID: 16176921.
- Usta MF, Sanabria J, Bivalacqua TJ, Hellstrom WJ. Feline penile erection induced by topical glans penis application of combination alprostadil and SEPA (Topiglan). Int J Impot Res. 2004 Feb;16(1):73-7. Erratum in: Int J Impot Res. 2004 Jun;16(3):303.. Sanabriav, J corrected to Sanabria, J. PubMed PMID: 14963475.

Inhibitor · Natural Compounds · Compound Libraries · Recombinant Proteins

This product is for Research Use Only · Not for Human or Veterinary or Therapeutic Use

Tel:781-999-4286 E_mail:info@targetmol.com Address:34 Washington Street,Wellesley Hills,MA 02481