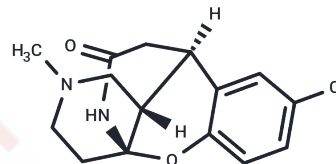


Lortalamine

Chemical Properties

CAS No. :	70384-91-7
Formula:	C ₁₅ H ₁₇ ClN ₂ O ₂
Molecular Weight:	292.76
Storage:	Powder: -20°C for 3 years In solvent: -80°C for 1 year Actual storage temperature shall be subject to the COA.



Biological Description

Description	Lortalamine is an antidepressant which was synthesized in the early 1980s. It acts as a potent and highly selective norepinephrine reuptake inhibitor.
Targets(IC50)	Others

Preparing Stock Solutions

	1mg	5mg	10mg
1 mM	3.4158 mL	17.0788 mL	34.1577 mL
5 mM	0.6832 mL	3.4158 mL	6.8315 mL
10 mM	0.3416 mL	1.7079 mL	3.4158 mL
50 mM	0.0683 mL	0.3416 mL	0.6832 mL

Please select the appropriate solvent to prepare the stock solution, according to the solubility of the product in different solvents. Please use it as soon as possible.

Note: The dilution table applies only to solid products. For liquid products, please calculate the stock solution based on the stated concentration and/or density.

Inhibitor · Natural Compounds · Compound Libraries · Recombinant Proteins

This product is for Research Use Only · Not for Human or Veterinary or Therapeutic Use

Tel: 781-999-4286 E_mail: info@targetmol.com Address: 34 Washington Street, Wellesley Hills, MA 02481