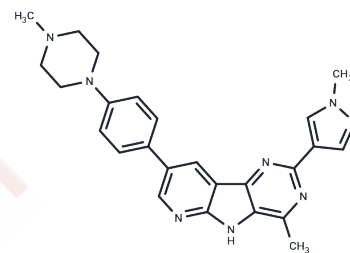


GNE 220

Chemical Properties

CAS No. :	1199590-75-4
Formula:	C ₂₅ H ₂₆ N ₈
Molecular Weight:	438.53
Storage:	Powder: -20°C for 3 years In solvent: -80°C for 1 year Actual storage temperature shall be subject to the COA.



Biological Description

Description	GNE-220 is a potent and selective inhibitor of MAP4K4, with an IC ₅₀ of 7 nM.
Targets(IC ₅₀)	Others, MAPK
In vitro	GNE-220 alters human umbilical vein endothelial cells (HUVEC) sprout morphology.? GNE-220 also reduces pERM+ retraction fibres in a dose-dependent manner.? GNE-220 also dose-dependently increased the number of active-INTβ1+ long focal adhesions (FAs). GNE-220 also inhibits a few other kinases with IC ₅₀ s of 9 nM, 476 nM and 1.1 μM for MINK (MAP4K6), DMPK and KHS1 (MAP4K5), respectively.

Preparing Stock Solutions

	1mg	5mg	10mg
1 mM	2.2803 mL	11.4017 mL	22.8035 mL
5 mM	0.4561 mL	2.2803 mL	4.5607 mL
10 mM	0.228 mL	1.1402 mL	2.2803 mL
50 mM	0.0456 mL	0.228 mL	0.4561 mL

Please select the appropriate solvent to prepare the stock solution, according to the solubility of the product in different solvents. Please use it as soon as possible.

Note: The dilution table applies only to solid products. For liquid products, please calculate the stock solution based on the stated concentration and/or density.

Reference

Vitorino P, et al. MAP4K4 regulates integrin-FERM binding to control endothelial cell motility. Nature. 2015 Mar 26; 519(7544):425-30.

Inhibitor · Natural Compounds · Compound Libraries · Recombinant Proteins

This product is for Research Use Only · Not for Human or Veterinary or Therapeutic Use

Tel:781-999-4286 E_mail:info@targetmol.com Address:34 Washington Street,Wellesley Hills,MA 02481