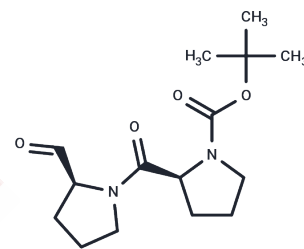


Prolyl Endopeptidase Inhibitor 1

Chemical Properties

CAS No. :	86925-97-5
Formula:	C ₁₅ H ₂₄ N ₂ O ₄
Molecular Weight:	296.36
Storage:	Powder: -20°C for 3 years In solvent: -80°C for 1 year Actual storage temperature shall be subject to the COA.



Biological Description

Description	Prolyl Endopeptidase Inhibitor 1 is a potent inhibitor of prolyl endopeptidase (PEP; PE) (K _i : 15 nM) , has anti-amnesic effect.
Targets(IC50)	Others,Prolyl Endopeptidase (PREP)
In vitro	Prolyl Endopeptidase Inhibitor 1strongly inhibits the mammalian prolyl endopeptidase with a K _i value of nM order, while the K _i value for the microbial enzyme is only of micromM order with K _i of 3.2 μM for Flavobacterium[1].

Preparing Stock Solutions

	1mg	5mg	10mg
1 mM	3.3743 mL	16.8714 mL	33.7427 mL
5 mM	0.6749 mL	3.3743 mL	6.7485 mL
10 mM	0.3374 mL	1.6871 mL	3.3743 mL
50 mM	0.0675 mL	0.3374 mL	0.6749 mL

Please select the appropriate solvent to prepare the stock solution, according to the solubility of the product in different solvents. Please use it as soon as possible.

Note: The dilution table applies only to solid products. For liquid products, please calculate the stock solution based on the stated concentration and/or density.

Reference

- Yoshimoto T, et al. Specific inhibitors for prolyl endopeptidase and their anti-amnesic effect. J Pharmacobiodyn. 1987 Dec;10(12):730-5.
- Yoshimoto T, et al. Comparison of inhibitory effects of prolyl-containing peptide derivatives on prolyl endopeptidases from bovine brain and Flavobacterium. J Biochem. 1985 Oct;98(4):975-9.

Inhibitor · Natural Compounds · Compound Libraries · Recombinant Proteins

This product is for Research Use Only · Not for Human or Veterinary or Therapeutic Use

Tel:781-999-4286 E_mail:info@targetmol.com Address:34 Washington Street,Wellesley Hills,MA 02481