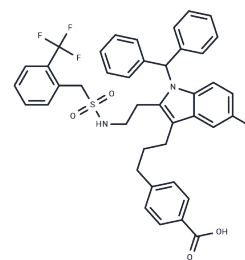


Giripladib

Chemical Properties

CAS No. :	865200-20-0
Formula:	C ₄₁ H ₃₆ ClF ₃ N ₂ O ₄ S
Molecular Weight:	745.25
Storage:	Powder: -20°C for 3 years In solvent: -80°C for 1 year Actual storage temperature shall be subject to the COA.



Biological Description

Description	Giripladib (PLA695)(PLX-695) is a cPLA2-specific inhibitor that inhibits the radiation-induced increase of phosphorylated ERK and phosphorylated Akt in endothelial cells.
Targets(IC50)	Phospholipase

Solubility Information

Solubility	DMSO: 7.46 mg/mL (10.01 mM), Sonication is recommended. (< 1 mg/ml refers to the product slightly soluble or insoluble)
------------	--

Preparing Stock Solutions

	1mg	5mg	10mg
1 mM	1.3418 mL	6.7092 mL	13.4183 mL
5 mM	0.2684 mL	1.3418 mL	2.6837 mL
10 mM	0.1342 mL	0.6709 mL	1.3418 mL
50 mM	0.0268 mL	0.1342 mL	0.2684 mL

Please select the appropriate solvent to prepare the stock solution, according to the solubility of the product in different solvents. Please use it as soon as possible.

Note: The dilution table applies only to solid products. For liquid products, please calculate the stock solution based on the stated concentration and/or density.

Reference

- Duvernay MT, et al. Platelet Lipidomic Profiling: Novel Insight into Cytosolic Phospholipase A₂α Activity and Its Role in Human Platelet Activation. *Biochemistry*. 2015 Sep 15;54(36):5578-88.
- Thotala D, et al. Cytosolic phospholipaseA2 inhibition with PLA-695 radiosensitizes tumors in lung cancer animal models. *PLoS One*. 2013 Jul 19;8(7):e69688.

Inhibitor · Natural Compounds · Compound Libraries · Recombinant Proteins

This product is for Research Use Only · Not for Human or Veterinary or Therapeutic Use

Tel:781-999-4286 E_mail:info@targetmol.com Address:34 Washington Street,Wellesley Hills,MA 02481