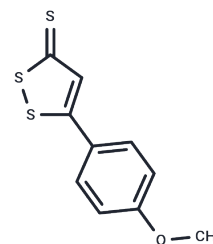


## Anethole trithione

## Chemical Properties

CAS No. :	532-11-6
Formula:	C <sub>10</sub> H <sub>8</sub> O <sub>3</sub> S <sub>3</sub>
Molecular Weight:	240.36
Storage:	Powder: -20°C for 3 years   In solvent: -80°C for 1 year Actual storage temperature shall be subject to the COA.



## Biological Description

Description	Anethole trithione (Anetholtrithion) is a bile secretion-stimulating drug that restores salivation and relieves the discomfort of dry mouth in chemotherapy-induced xerostomia.
Targets(IC50)	AChR

## Solubility Information

Solubility	DMSO: 50 mg/mL (208.02 mM), Sonication is recommended. (< 1 mg/ml refers to the product slightly soluble or insoluble)
In vivo Formulation	10% DMSO+40% PEG300+5% Tween 80+45% Saline: 2 mg/mL (8.32 mM), Sonication is recommended. <i>Please add the solvents sequentially, clarifying the solution as much as possible before adding the next one. Dissolve by heating and/or sonication if necessary. Working solution is recommended to be prepared and used immediately. The formulation provided above is for reference purposes only. In vivo formulations may vary and should be modified based on specific experimental conditions.</i>

## Preparing Stock Solutions

	1mg	5mg	10mg
1 mM	4.1604 mL	20.8021 mL	41.6043 mL
5 mM	0.8321 mL	4.1604 mL	8.3209 mL
10 mM	0.416 mL	2.0802 mL	4.1604 mL
50 mM	0.0832 mL	0.416 mL	0.8321 mL

Please select the appropriate solvent to prepare the stock solution, according to the solubility of the product in different solvents. Please use it as soon as possible.

Note: The dilution table applies only to solid products. For liquid products, please calculate the stock solution based on the stated concentration and/or density.

Reference

Ukai Y, et al. Arzneimittelforschung. 1988 Oct; 38(10):1460-5.

Cheng K, Liu B, Zhang X S, et al. Biomimetic material degradation for synergistic enhanced therapy by regulating endogenous energy metabolism imaging under hypothermia. Nature Communications. 2022, 13(1): 1-18

**Inhibitor · Natural Compounds · Compound Libraries · Recombinant Proteins**

This product is for Research Use Only· Not for Human or Veterinary or Therapeutic Use

Tel:781-999-4286 E\_mail:info@targetmol.com Address:34 Washington Street,Wellesley Hills,MA 02481