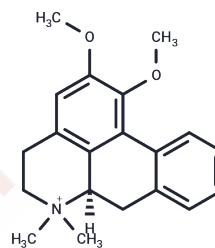


N-Methylnuciferine iodide

Chemical Properties

CAS No. :	53098-68-3
Formula:	C ₂₀ H ₂₄ INO ₂
Molecular Weight:	437.31
Storage:	Powder: -20°C for 3 years In solvent: -80°C for 1 year Actual storage temperature shall be subject to the COA.



Biological Description

Description	N-Methylnuciferine iodide, an alkaloid derived from Lotus Plumule, can mitigate depression-like behavior induced by lipopolysaccharides.
Targets(IC50)	NO Synthase, Autophagy

Preparing Stock Solutions

	1mg	5mg	10mg
1 mM	2.2867 mL	11.4335 mL	22.8671 mL
5 mM	0.4573 mL	2.2867 mL	4.5734 mL
10 mM	0.2287 mL	1.1434 mL	2.2867 mL
50 mM	0.0457 mL	0.2287 mL	0.4573 mL

Please select the appropriate solvent to prepare the stock solution, according to the solubility of the product in different solvents. Please use it as soon as possible.

Note: The dilution table applies only to solid products. For liquid products, please calculate the stock solution based on the stated concentration and/or density.

Inhibitor · Natural Compounds · Compound Libraries · Recombinant Proteins

This product is for Research Use Only · Not for Human or Veterinary or Therapeutic Use

Tel: 781-999-4286 E_mail: info@targetmol.com Address: 34 Washington Street, Wellesley Hills, MA 02481