

Cysteine peptide

Chemical Properties

CAS No. : 845727-64-2

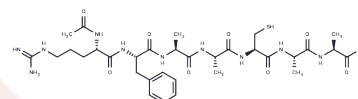
Formula: C32H50N10O9S

Molecular Weight: 750.87

Keep away from moisture

Storage: Powder: -20°C for 3 years | In solvent: -80°C for 1 year

Actual storage temperature shall be subject to the COA.



Biological Description

Description	Cysteine peptide is a heptapeptide that contains a cysteine residue, whose thiol group is susceptible to various oxidative modifications. It is employed to assess the skin sensitization potential of chemicals, including those in cosmetics.
Targets(IC50)	Others

Preparing Stock Solutions

	1mg	5mg	10mg
1 mM	1.3318 mL	6.6589 mL	13.3179 mL
5 mM	0.2664 mL	1.3318 mL	2.6636 mL
10 mM	0.1332 mL	0.6659 mL	1.3318 mL
50 mM	0.0266 mL	0.1332 mL	0.2664 mL

Please select the appropriate solvent to prepare the stock solution, according to the solubility of the product in different solvents. Please use it as soon as possible.

Note: The dilution table applies only to solid products. For liquid products, please calculate the stock solution based on the stated concentration and/or density.

Inhibitor · Natural Compounds · Compound Libraries · Recombinant Proteins

This product is for Research Use Only · Not for Human or Veterinary or Therapeutic Use

Tel:781-999-4286

E_mail:info@targetmol.com

Address:34 Washington Street,Wellesley Hills,MA 02481