

LETC

Chemical Properties

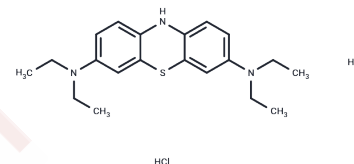
CAS No. : 951131-13-8

Formula: C₂₀H₂₉Cl₂N₃S

Molecular Weight: 414.43

Storage: Powder: -20°C for 3 years | In solvent: -80°C for 1 year

Actual storage temperature shall be subject to the COA.



Biological Description

Description	LETC is an orally active α -synuclein (α -Syn) aggregation inhibitor with an EC ₅₀ of 66 nM in transfected DH60.21 neuroblastoma cells. It can cross the blood-brain barrier and is applicable in studying synucleinopathies.
Targets(IC ₅₀)	Others
In vitro	LETC inhibits α -synuclein aggregation in DH60.21 neuroblastoma cells that have been transfected, with an EC ₅₀ of 66 nM.
In vivo	LETC (10 mg/kg; oral administration; 5 days per week; for 6 weeks) significantly reduces α -Syn-positive neurons in various brain regions, thereby alleviating motor deficits in these mice during open field tests. However, LETC does not improve activity deficits in L62 mice within their home cage environment. Following oral administration in α -Syn transgenic L62 mice, LETC accumulates in the brain with a half-life of approximately 6 hours.

Preparing Stock Solutions

	1mg	5mg	10mg
1 mM	2.413 mL	12.0648 mL	24.1295 mL
5 mM	0.4826 mL	2.413 mL	4.8259 mL
10 mM	0.2413 mL	1.2065 mL	2.413 mL
50 mM	0.0483 mL	0.2413 mL	0.4826 mL

Please select the appropriate solvent to prepare the stock solution, according to the solubility of the product in different solvents. Please use it as soon as possible.

Note: The dilution table applies only to solid products. For liquid products, please calculate the stock solution based on the stated concentration and/or density.

Inhibitor · Natural Compounds · Compound Libraries · Recombinant Proteins

This product is for Research Use Only · Not for Human or Veterinary or Therapeutic Use

Tel:781-999-4286 E_mail:info@targetmol.com Address:34 Washington Street,Wellesley Hills,MA 02481