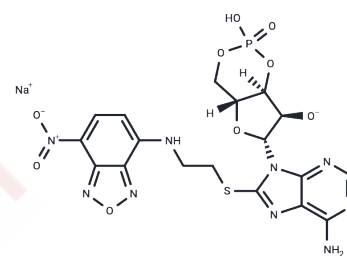


8-NBD-cAMP sodium

Chemical Properties

CAS No. :	221905-51-7
Formula:	C ₁₈ H ₁₈ N ₉ NaO ₉ PS
Molecular Weight:	589.41
Storage:	Keep away from direct sunlight Store at -20°C <small>Actual storage temperature shall be subject to the COA.</small>



Biological Description

Description	8-NBD-cAMP sodium is a fluorescently labeled analog of cyclic adenosine monophosphate (cAMP). It maintains biological activity similar to cAMP by modulating the activity of specific proteins such as EPACs or PKA through binding. 8-NBD-cAMP sodium is utilized in fluorescence competition binding assays to assess the binding affinity of newly synthesized EPAC1 agonists with EPAC1 proteins.
Targets(IC50)	Others

Preparing Stock Solutions

	1mg	5mg	10mg
1 mM	1.6966 mL	8.4831 mL	16.9661 mL
5 mM	0.3393 mL	1.6966 mL	3.3932 mL
10 mM	0.1697 mL	0.8483 mL	1.6966 mL
50 mM	0.0339 mL	0.1697 mL	0.3393 mL

Please select the appropriate solvent to prepare the stock solution, according to the solubility of the product in different solvents. Please use it as soon as possible.

Note: The dilution table applies only to solid products. For liquid products, please calculate the stock solution based on the stated concentration and/or density.

Inhibitor · Natural Compounds · Compound Libraries · Recombinant Proteins

This product is for Research Use Only · Not for Human or Veterinary or Therapeutic Use

Tel:781-999-4286 E_mail:info@targetmol.com Address:34 Washington Street,Wellesley Hills,MA 02481