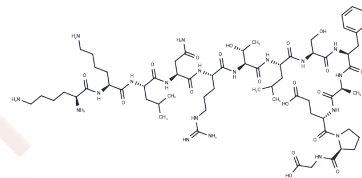


Ziptide

Chemical Properties

CAS No. :	518069-98-2
Formula:	C65H109N19O19
Molecular Weight:	1460.68
Storage:	Keep away from moisture Powder: -20°C for 3 years In solvent: -80°C for 1 year <small>Actual storage temperature shall be subject to the COA.</small>



Biological Description

Description	Ziptide serves as a substrate for various kinases, including MAPK protein kinase 2 (MAPKAPK2, Km= 5 μM), MAPKAPK3 (Km= 30 μM), PARK (Km= 40 μM), checkpoint kinase 1 (Chk1, Km= 5 μM), AMP-activated protein kinase (AMPK, Km= 75 μM), and calcium/calmodulin-dependent protein kinase II (CamKII, Km= 300 μM).
Targets(IC50)	MAPK,AMPK,Chk

Preparing Stock Solutions

	1mg	5mg	10mg
1 mM	0.6846 mL	3.4231 mL	6.8461 mL
5 mM	0.1369 mL	0.6846 mL	1.3692 mL
10 mM	0.0685 mL	0.3423 mL	0.6846 mL
50 mM	0.0137 mL	0.0685 mL	0.1369 mL

Please select the appropriate solvent to prepare the stock solution, according to the solubility of the product in different solvents. Please use it as soon as possible.

Note: The dilution table applies only to solid products. For liquid products, please calculate the stock solution based on the stated concentration and/or density.

Inhibitor · Natural Compounds · Compound Libraries · Recombinant Proteins

This product is for Research Use Only · Not for Human or Veterinary or Therapeutic Use

Tel:781-999-4286 E_mail:info@targetmol.com Address:34 Washington Street,Wellesley Hills,MA 02481