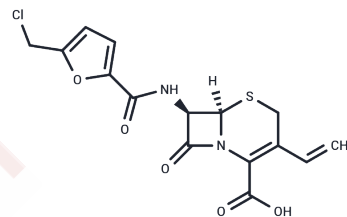


SPOP-IN-2

Chemical Properties

CAS No. :	3031640-86-2
Formula:	C ₁₅ H ₁₃ ClN ₂ O ₅ S
Molecular Weight:	368.79
Storage:	Powder: -20°C for 3 years In solvent: -80°C for 1 year Actual storage temperature shall be subject to the COA.



Biological Description

Description	SPOP-IN-2 (Compound E1) is a potent inhibitor of speckle-type POZ protein (SPOP), with an IC ₅₀ of 0.58 μM. It disrupts the interaction between SPOP and substrates and selectively inhibits the proliferation of clear cell renal cell carcinoma (ccRCC).
Targets(IC ₅₀)	E1/E2/E3 Enzyme
In vitro	SPOP-IN-2 (0-40 μM) disrupts the interaction between SPOP MATH protein and Myc-PTEN or Myc-DUSP7 by competing with puc-SBC1 peptide for binding to the SPOP MATH protein. Additionally, SPOP-IN-2 (0-50 μM) selectively inhibits colony formation in ccRCC cell lines OS-RC-2, 786-O, A498, and 769-P.

Preparing Stock Solutions

	1mg	5mg	10mg
1 mM	2.7116 mL	13.5579 mL	27.1157 mL
5 mM	0.5423 mL	2.7116 mL	5.4231 mL
10 mM	0.2712 mL	1.3558 mL	2.7116 mL
50 mM	0.0542 mL	0.2712 mL	0.5423 mL

Please select the appropriate solvent to prepare the stock solution, according to the solubility of the product in different solvents. Please use it as soon as possible.

Note: The dilution table applies only to solid products. For liquid products, please calculate the stock solution based on the stated concentration and/or density.

Inhibitor · Natural Compounds · Compound Libraries · Recombinant Proteins

This product is for Research Use Only · Not for Human or Veterinary or Therapeutic Use

Tel:781-999-4286 E_mail:info@targetmol.com Address:34 Washington Street,Wellesley Hills,MA 02481