

BET-IN-21

## Chemical Properties

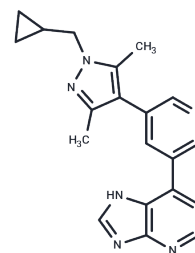
CAS No. : 3014815-06-3

Formula: C<sub>20</sub>H<sub>20</sub>N<sub>6</sub>

Molecular Weight: 344.41

Storage: Powder: -20°C for 3 years | In solvent: -80°C for 1 year

Actual storage temperature shall be subject to the COA.



## Biological Description

Description	BET-IN-21 (compound 16) is a BET (Bromo and Extra-Terminal domain) inhibitor capable of penetrating the blood-brain barrier, with a $K_i$ value of 230 nM. It suppresses microglial activation and demonstrates therapeutic effects in mice with experimental autoimmune encephalomyelitis.
Targets(IC50)	Epigenetic Reader Domain

## Preparing Stock Solutions

	1mg	5mg	10mg
1 mM	2.9035 mL	14.5176 mL	29.0352 mL
5 mM	0.5807 mL	2.9035 mL	5.807 mL
10 mM	0.2904 mL	1.4518 mL	2.9035 mL
50 mM	0.0581 mL	0.2904 mL	0.5807 mL

Please select the appropriate solvent to prepare the stock solution, according to the solubility of the product in different solvents. Please use it as soon as possible.

Note: The dilution table applies only to solid products. For liquid products, please calculate the stock solution based on the stated concentration and/or density.

Inhibitor · Natural Compounds · Compound Libraries · Recombinant Proteins

This product is for Research Use Only · Not for Human or Veterinary or Therapeutic Use

Tel:781-999-4286

E\_mail:info@targetmol.com

Address:34 Washington Street,Wellesley Hills,MA 02481