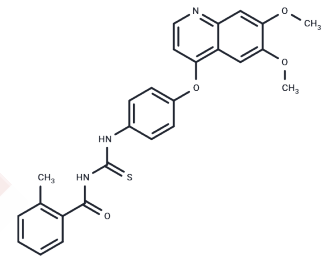


Ki11502

## Chemical Properties

CAS No. : 347155-76-4  
 Formula: C<sub>26</sub>H<sub>23</sub>N<sub>3</sub>O<sub>4</sub>S  
 Molecular Weight: 473.54  
 Storage: Powder: -20°C for 3 years | In solvent: -80°C for 1 year  
 Actual storage temperature shall be subject to the COA.



## Biological Description

|                            |  |
|----------------------------|--|
| Description                | Ki11502 is a multi-target receptor tyrosine kinase (RTK) inhibitor that selectively inhibits the activity of PDGFβ/α receptors (with an IC <sub>50</sub> of less than 10 nM). It specifically suppresses PDGFβ receptor phosphorylation, proliferation, and proteoglycan synthesis in human vascular smooth muscle cells. Additionally, Ki11502 induces apoptosis and exhibits significant antiproliferative effects against specific leukemia subgroups, including those with Imatinib-resistant mutations. It is particularly suitable for studying the role of PDGF in vascular diseases and the involvement of proteoglycans in atherosclerosis. |
| Targets(IC <sub>50</sub> ) | Apoptosis,Bcl-2 Family,FLT,Akt,PDGFR   |
| In vitro                   | Ki11502, at concentrations of 0.1-1 nM and over a duration of 2 days, significantly induces growth arrest, G <sub>0</sub> /G <sub>1</sub> cell cycle arrest, and apoptosis (Apoptosis) in eosinophilic leukemia EOL-1 cells carrying the activated FIP1-like 1/PDGFRα fusion gene. Additionally, Ki11502 reduces the levels of p-PDGFRα and its downstream signaling components, including p-Akt, p-ERK, and p-STAT5, in EOL-1 cells within 3 hours.   |
| In vivo                    | Ki11502 administered at a dosage of 50 mg/kg, via oral gavage, twice daily for five consecutive days, completely inhibited the proliferation of EOL-1 tumor xenograft cells in SCID mice.  |

### Preparing Stock Solutions

---

|       | <b>1mg</b> | <b>5mg</b> | <b>10mg</b> |
|-------|------------|------------|-------------|
| 1 mM  | 2.1118 mL  | 10.5588 mL | 21.1175 mL  |
| 5 mM  | 0.4224 mL  | 2.1118 mL  | 4.2235 mL   |
| 10 mM | 0.2112 mL  | 1.0559 mL  | 2.1118 mL   |
| 50 mM | 0.0422 mL  | 0.2112 mL  | 0.4224 mL   |

---

Please select the appropriate solvent to prepare the stock solution, according to the solubility of the product in different solvents. Please use it as soon as possible.

Note: The dilution table applies only to solid products. For liquid products, please calculate the stock solution based on the stated concentration and/or density.

**Inhibitor · Natural Compounds · Compound Libraries · Recombinant Proteins**

This product is for Research Use Only · Not for Human or Veterinary or Therapeutic Use

Tel:781-999-4286 E\_mail:info@targetmol.com Address:34 Washington Street,Wellesley Hills,MA 02481