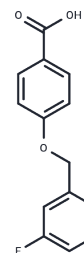


NW-1689

Chemical Properties

CAS No. : 405-85-6
 Formula: C₁₄H₁₁FO₃
 Molecular Weight: 246.23
 Storage: Powder: -20°C for 3 years | In solvent: -80°C for 1 year
 Actual storage temperature shall be subject to the COA.



Biological Description

Description	NW-1689 is a process-related impurity of safinamide mesilate (SAFM), which is a medication used in the treatment of Parkinson's disease (PD). SAFM acts as a highly selective and reversible inhibitor of monoamine oxidase-B (MAO-B) and also blocks sodium and N-type calcium channels. These actions assist in reducing dopamine breakdown and suppressing glutamate release. NW-1689 shares structural similarities with SAFM and exhibits comparable pharmacological effects, making it applicable in Parkinson's disease research.
Targets(IC50)	Others

Preparing Stock Solutions

	1mg	5mg	10mg
1 mM	4.0612 mL	20.3062 mL	40.6124 mL
5 mM	0.8122 mL	4.0612 mL	8.1225 mL
10 mM	0.4061 mL	2.0306 mL	4.0612 mL
50 mM	0.0812 mL	0.4061 mL	0.8122 mL

Please select the appropriate solvent to prepare the stock solution, according to the solubility of the product in different solvents. Please use it as soon as possible.

Note: The dilution table applies only to solid products. For liquid products, please calculate the stock solution based on the stated concentration and/or density.

Inhibitor · Natural Compounds · Compound Libraries · Recombinant Proteins

This product is for Research Use Only · Not for Human or Veterinary or Therapeutic Use

Tel:781-999-4286 E_mail:info@targetmol.com Address:34 Washington Street,Wellesley Hills,MA 02481