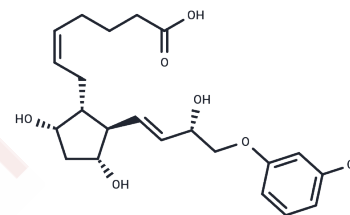


(+)-15-epi Cloprostenol**Chemical Properties**

CAS No. : 54276-22-1
 Formula: C₂₂H₂₉ClO₆
 Molecular Weight: 424.92
 Storage: Powder: -20°C for 3 years | In solvent: -80°C for 1 year
Actual storage temperature shall be subject to the COA.

**Biological Description**

Description	(+)-15-epi Cloprostenol is a synthetic analogue of prostaglandin F ₂ α (PGF ₂ α) and functions as a potent FP receptor agonist. The compound (+)-15-epi Cloprostenol is the 15(S) or 15β-hydroxy enantiomer of (+)-(+)-15-epi Cloprostenol. Compared to the 15(R)-(+)-15-epi Cloprostenol, this epimer exhibits significantly lower activity as an FP receptor ligand. However, the specific activity of this isomer remains inadequately studied.
Targets(IC50)	Prostaglandin Receptor

Preparing Stock Solutions

	1mg	5mg	10mg
1 mM	2.3534 mL	11.7669 mL	23.5338 mL
5 mM	0.4707 mL	2.3534 mL	4.7068 mL
10 mM	0.2353 mL	1.1767 mL	2.3534 mL
50 mM	0.0471 mL	0.2353 mL	0.4707 mL

Please select the appropriate solvent to prepare the stock solution, according to the solubility of the product in different solvents. Please use it as soon as possible.

Note: The dilution table applies only to solid products. For liquid products, please calculate the stock solution based on the stated concentration and/or density.

Inhibitor · Natural Compounds · Compound Libraries · Recombinant Proteins

This product is for Research Use Only · Not for Human or Veterinary or Therapeutic Use

Tel: 781-999-4286 E_mail: info@targetmol.com Address: 34 Washington Street, Wellesley Hills, MA 02481