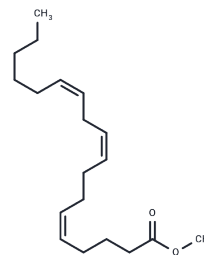


## Pinolenic acid methyl ester

## Chemical Properties

CAS No. :	38406-57-4
Formula:	C <sub>19</sub> H <sub>32</sub> O <sub>2</sub>
Molecular Weight:	292.46
Storage:	Powder: -20°C for 3 years   In solvent: -80°C for 1 year Actual storage temperature shall be subject to the COA.



## Biological Description

Description	Pinolenic acid methyl ester, the methylated form of pinolenic acid, can be used for analyzing fatty acid content.
Targets(IC50)	Others

## Preparing Stock Solutions

	1mg	5mg	10mg
1 mM	3.4193 mL	17.0964 mL	34.1927 mL
5 mM	0.6839 mL	3.4193 mL	6.8385 mL
10 mM	0.3419 mL	1.7096 mL	3.4193 mL
50 mM	0.0684 mL	0.3419 mL	0.6839 mL

Please select the appropriate solvent to prepare the stock solution, according to the solubility of the product in different solvents. Please use it as soon as possible.

Note: The dilution table applies only to solid products. For liquid products, please calculate the stock solution based on the stated concentration and/or density.

Inhibitor · Natural Compounds · Compound Libraries · Recombinant Proteins

This product is for Research Use Only · Not for Human or Veterinary or Therapeutic Use

Tel:781-999-4286 E\_mail:info@targetmol.com Address:34 Washington Street,Wellesley Hills,MA 02481