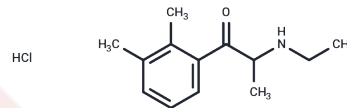


## 2,3-Dimethylethcathinone hydrochloride

## Chemical Properties

CAS No. : 2705531-06-0  
 Formula: C<sub>13</sub>H<sub>20</sub>ClNO  
 Molecular Weight: 241.76  
 Storage: Powder: -20°C for 3 years | In solvent: -80°C for 1 year  
 Actual storage temperature shall be subject to the COA.



## Biological Description

Description	2,3-Dimethylethcathinone (2,3-Dmec) hydrochloride is a cathinone and an analog of ethcathinone. Ethcathinone enhances peak dopamine release following electrical stimulation and slows dopamine reuptake in rats.
Targets(IC50)	Others

## Preparing Stock Solutions

	1mg	5mg	10mg
1 mM	4.1363 mL	20.6817 mL	41.3633 mL
5 mM	0.8273 mL	4.1363 mL	8.2727 mL
10 mM	0.4136 mL	2.0682 mL	4.1363 mL
50 mM	0.0827 mL	0.4136 mL	0.8273 mL

Please select the appropriate solvent to prepare the stock solution, according to the solubility of the product in different solvents. Please use it as soon as possible.

Note: The dilution table applies only to solid products. For liquid products, please calculate the stock solution based on the stated concentration and/or density.

Inhibitor · Natural Compounds · Compound Libraries · Recombinant Proteins

This product is for Research Use Only · Not for Human or Veterinary or Therapeutic Use

Tel: 781-999-4286 E\_mail: info@targetmol.com Address: 34 Washington Street, Wellesley Hills, MA 02481