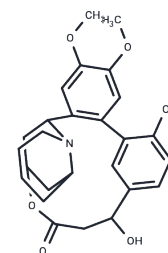


## Lythridine

## Chemical Properties

CAS No. :	15299-77-1
Formula:	C <sub>26</sub> H <sub>31</sub> N <sub>0</sub> O <sub>6</sub>
Molecular Weight:	453.53
Storage:	Powder: -20°C for 3 years   In solvent: -80°C for 1 year Actual storage temperature shall be subject to the COA.



## Biological Description

Description	Lythridine (Sinine) is a biphenylquinoline lactone alkaloid initially isolated from the ash tree, which is known for its antimalarial properties. The compound is also found in the willow-leaved ash tree.
Targets(IC50)	Others

## Preparing Stock Solutions

	1mg	5mg	10mg
1 mM	2.2049 mL	11.0246 mL	22.0493 mL
5 mM	0.441 mL	2.2049 mL	4.4099 mL
10 mM	0.2205 mL	1.1025 mL	2.2049 mL
50 mM	0.0441 mL	0.2205 mL	0.441 mL

Please select the appropriate solvent to prepare the stock solution, according to the solubility of the product in different solvents. Please use it as soon as possible.

Note: The dilution table applies only to solid products. For liquid products, please calculate the stock solution based on the stated concentration and/or density.

**Inhibitor · Natural Compounds · Compound Libraries · Recombinant Proteins**

This product is for Research Use Only · Not for Human or Veterinary or Therapeutic Use

Tel: 781-999-4286 E\_mail: info@targetmol.com Address: 34 Washington Street, Wellesley Hills, MA 02481