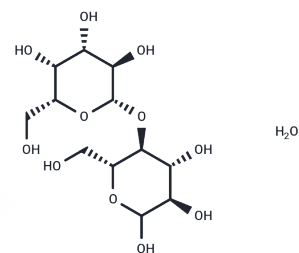


D-Lactose monohydrate

Chemical Properties

CAS No. : 10039-26-6
 Formula: C₁₂H₂₄O₁₂
 Molecular Weight: 360.31
 Storage: Powder: -20°C for 3 years | In solvent: -80°C for 1 year
Actual storage temperature shall be subject to the COA.



Biological Description

Description	D-Lactose monohydrate is a type of lactose comprised of D-galactose and D-glucose. This compound can be utilized as a sweetener or excipient.
Targets(IC50)	Others

Preparing Stock Solutions

	1mg	5mg	10mg
1 mM	2.7754 mL	13.8769 mL	27.7539 mL
5 mM	0.5551 mL	2.7754 mL	5.5508 mL
10 mM	0.2775 mL	1.3877 mL	2.7754 mL
50 mM	0.0555 mL	0.2775 mL	0.5551 mL

Please select the appropriate solvent to prepare the stock solution, according to the solubility of the product in different solvents. Please use it as soon as possible.

Note: The dilution table applies only to solid products. For liquid products, please calculate the stock solution based on the stated concentration and/or density.

Inhibitor · Natural Compounds · Compound Libraries · Recombinant Proteins

This product is for Research Use Only · Not for Human or Veterinary or Therapeutic Use

Tel:781-999-4286 E_mail:info@targetmol.com Address:34 Washington Street,Wellesley Hills,MA 02481