

Cerberin

Chemical Properties

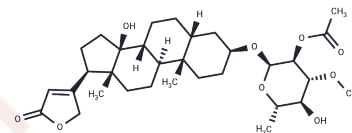
CAS No. : 25633-33-4

Formula: C₃₂H₄₈O₉

Molecular Weight: 576.72

Storage: Powder: -20°C for 3 years | In solvent: -80°C for 1 year

Actual storage temperature shall be subject to the COA.



Biological Description

Description	Cerberin is a cardiac glycoside found in <i>C. odollam</i> with cytotoxic and cardiac regulatory properties. It exhibits cytotoxicity against KB and NCI H187 cancer cells (IC ₅₀ s = 1.92 and 1.24 µg/mL). Cerberin inhibits Na ⁺ /K ⁺ -ATPase, elevating intracellular sodium levels and prolonging action potential duration in cardiac cells.
Targets(IC ₅₀)	ATPase

Preparing Stock Solutions

	1mg	5mg	10mg
1 mM	1.7339 mL	8.6697 mL	17.3394 mL
5 mM	0.3468 mL	1.7339 mL	3.4679 mL
10 mM	0.1734 mL	0.867 mL	1.7339 mL
50 mM	0.0347 mL	0.1734 mL	0.3468 mL

Please select the appropriate solvent to prepare the stock solution, according to the solubility of the product in different solvents. Please use it as soon as possible.

Note: The dilution table applies only to solid products. For liquid products, please calculate the stock solution based on the stated concentration and/or density.

Inhibitor · Natural Compounds · Compound Libraries · Recombinant Proteins

This product is for Research Use Only · Not for Human or Veterinary or Therapeutic Use

Tel:781-999-4286 E_mail:info@targetmol.com Address:34 Washington Street,Wellesley Hills,MA 02481