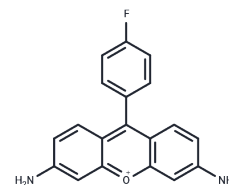


Kyoto probe 1

Chemical Properties

CAS No. :	2088021-81-0
Formula:	C ₂₁ H ₁₄ F ₄ N ₂ O ₃
Molecular Weight:	418.34
Storage:	Keep away from direct sunlight Store at -20°C <small>Actual storage temperature shall be subject to the COA.</small>



Biological Description

Description	Kyoto probe 1 is a fluorescent probe specifically designed for hiPSCs. It selectively labels human pluripotent stem cells and identifies them by recognizing the distinct expression patterns of ATP-binding cassette (ABC) transporters in hiPS cells compared to differentiated cells.
Targets(IC50)	Others

Preparing Stock Solutions

	1mg	5mg	10mg
1 mM	2.3904 mL	11.952 mL	23.904 mL
5 mM	0.4781 mL	2.3904 mL	4.7808 mL
10 mM	0.239 mL	1.1952 mL	2.3904 mL
50 mM	0.0478 mL	0.239 mL	0.4781 mL

Please select the appropriate solvent to prepare the stock solution, according to the solubility of the product in different solvents. Please use it as soon as possible.

Note: The dilution table applies only to solid products. For liquid products, please calculate the stock solution based on the stated concentration and/or density.

Inhibitor · Natural Compounds · Compound Libraries · Recombinant Proteins

This product is for Research Use Only · Not for Human or Veterinary or Therapeutic Use

Tel: 781-999-4286 E_mail: info@targetmol.com Address: 34 Washington Street, Wellesley Hills, MA 02481