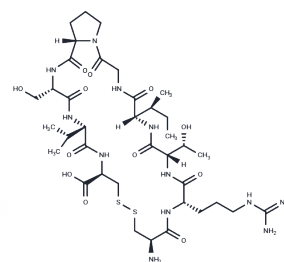


CRT

## Chemical Properties

CAS No. :	2414254-70-7
Formula:	C <sub>37</sub> H <sub>64</sub> N <sub>12</sub> O <sub>12</sub> S <sub>2</sub>
Molecular Weight:	933.11
Storage:	Keep away from moisture Powder: -20°C for 3 years   In solvent: -80°C for 1 year <small>Actual storage temperature shall be subject to the COA.</small>



## Biological Description

Description	CRT is an iron-peptide mimic capable of binding to apotransferrin (apo-Tf). It can be used to modify nanoparticles to enhance drug delivery efficiency.
Targets(IC50)	Others

## Preparing Stock Solutions

	1mg	5mg	10mg
1 mM	1.0717 mL	5.3584 mL	10.7169 mL
5 mM	0.2143 mL	1.0717 mL	2.1434 mL
10 mM	0.1072 mL	0.5358 mL	1.0717 mL
50 mM	0.0214 mL	0.1072 mL	0.2143 mL

Please select the appropriate solvent to prepare the stock solution, according to the solubility of the product in different solvents. Please use it as soon as possible.

Note: The dilution table applies only to solid products. For liquid products, please calculate the stock solution based on the stated concentration and/or density.

**Inhibitor · Natural Compounds · Compound Libraries · Recombinant Proteins**

This product is for Research Use Only · Not for Human or Veterinary or Therapeutic Use

Tel:781-999-4286 E\_mail:info@targetmol.com Address:34 Washington Street,Wellesley Hills,MA 02481