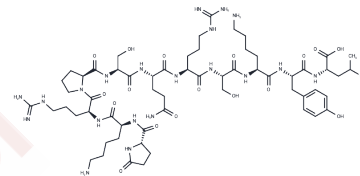


## [pGlu4]-Myelin Basic Protein (4-14)

## Chemical Properties

CAS No. :	136132-68-8
Formula:	C60H100N20O17
Molecular Weight:	1373.56
Storage:	Keep away from moisture Powder: -20°C for 3 years   In solvent: -80°C for 1 year <small>Actual storage temperature shall be subject to the COA.</small>



## Biological Description

Description	[pGlu4]-Myelin Basic Protein (4-14) is a phosphorylated fragment of myelin basic protein, specifically the sequence from 4 to 14 (EKRP5QRSKYL). This peptide fragment is centered around the serine residue at position 8 in the myelin basic protein.
Targets(IC50)	Others

## Preparing Stock Solutions

	1mg	5mg	10mg
1 mM	0.728 mL	3.6402 mL	7.2804 mL
5 mM	0.1456 mL	0.728 mL	1.4561 mL
10 mM	0.0728 mL	0.364 mL	0.728 mL
50 mM	0.0146 mL	0.0728 mL	0.1456 mL

Please select the appropriate solvent to prepare the stock solution, according to the solubility of the product in different solvents. Please use it as soon as possible.

Note: The dilution table applies only to solid products. For liquid products, please calculate the stock solution based on the stated concentration and/or density.

**Inhibitor · Natural Compounds · Compound Libraries · Recombinant Proteins**

This product is for Research Use Only · Not for Human or Veterinary or Therapeutic Use

Tel: 781-999-4286 E\_mail: info@targetmol.com Address: 34 Washington Street, Wellesley Hills, MA 02481