

SLLK, Control Peptide for TSP1 Inhibitor

Chemical Properties

CAS No. : 2918768-29-1

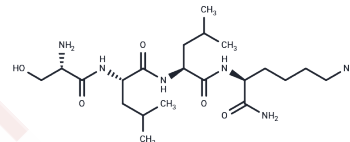
Formula: C₂₁H₄₂N₆O₅

Molecular Weight: 458.60

Keep away from moisture

Storage: Powder: -20°C for 3 years | In solvent: -80°C for 1 year

Actual storage temperature shall be subject to the COA.



Biological Description

Description	SLLK, the control peptide for the TSP1 inhibitor, serves as the counterpart to LSKL.
Targets(IC50)	TGF-beta/Smad
In vivo	On day 42, the plasma TGF-β1 level in mice administered with LSKL is considerably lower (0.10±0.01 pg/mL) than in those treated with the SLLK control peptide (0.20±0.02 pg/mL; P=0.0001). The mRNA levels are evaluated in the suprarenal aortic lysates of mice given SLLK and LSKL peptides. Additionally, Akita mice treated with 30 mg/kg of LSKL show a more than twofold increase in nephrin expression in renal lysates compared to both saline controls and SLLK-treated mice.

Preparing Stock Solutions

	1mg	5mg	10mg
1 mM	2.1805 mL	10.9027 mL	21.8055 mL
5 mM	0.4361 mL	2.1805 mL	4.3611 mL
10 mM	0.2181 mL	1.0903 mL	2.1805 mL
50 mM	0.0436 mL	0.2181 mL	0.4361 mL

Please select the appropriate solvent to prepare the stock solution, according to the solubility of the product in different solvents. Please use it as soon as possible.

Note: The dilution table applies only to solid products. For liquid products, please calculate the stock solution based on the stated concentration and/or density.

Inhibitor · Natural Compounds · Compound Libraries · Recombinant Proteins

This product is for Research Use Only · Not for Human or Veterinary or Therapeutic Use

Tel:781-999-4286

E_mail:info@targetmol.com

Address:34 Washington Street,Wellesley Hills,MA 02481