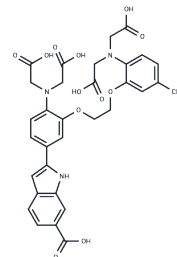


INDO 1

Chemical Properties

CAS No. :	96314-96-4
Formula:	C ₃₂ H ₃₁ N ₃ O ₁₂
Molecular Weight:	649.60
Storage:	Keep away from direct sunlight Store at -20°C <small>Actual storage temperature shall be subject to the COA.</small>



Biological Description

Description	INDO 1 is a Ca ²⁺ (calcium ion) fluorescent probe that specifically binds to Ca ²⁺ while emitting fluorescence, causing the maximum emission wavelength to shift from 485 nm before binding to 410 nm after binding.
Targets(IC50)	Others

Preparing Stock Solutions

	1mg	5mg	10mg
1 mM	1.5394 mL	7.697 mL	15.3941 mL
5 mM	0.3079 mL	1.5394 mL	3.0788 mL
10 mM	0.1539 mL	0.7697 mL	1.5394 mL
50 mM	0.0308 mL	0.1539 mL	0.3079 mL

Please select the appropriate solvent to prepare the stock solution, according to the solubility of the product in different solvents. Please use it as soon as possible.

Note: The dilution table applies only to solid products. For liquid products, please calculate the stock solution based on the stated concentration and/or density.

Inhibitor · Natural Compounds · Compound Libraries · Recombinant Proteins

This product is for Research Use Only · Not for Human or Veterinary or Therapeutic Use

Tel:781-999-4286 E_mail:info@targetmol.com Address:34 Washington Street,Wellesley Hills,MA 02481