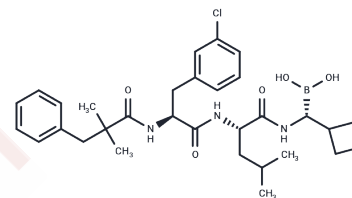


## HTRA1-IN-1

### Chemical Properties

CAS No. : 3052552-04-9  
 Formula: C<sub>31</sub>H<sub>43</sub>BClN<sub>3</sub>O<sub>5</sub>  
 Molecular Weight: 583.95  
 Storage: Powder: -20°C for 3 years | In solvent: -80°C for 1 year  
*Actual storage temperature shall be subject to the COA.*



### Biological Description

Description	HTRA1-IN-1 (Compound 17) is a selective inhibitor of the serine protease high temperature requirement A serine peptidase 1 (HTRA1), with an IC <sub>50</sub> of 13 nM. It shows potential for improving conditions related to HTRA1, such as age-related macular degeneration (AMD), osteoarthritis, and rheumatoid arthritis.
Targets(IC <sub>50</sub> )	Serine Protease

### Preparing Stock Solutions

	1mg	5mg	10mg
1 mM	1.7125 mL	8.5624 mL	17.1248 mL
5 mM	0.3425 mL	1.7125 mL	3.425 mL
10 mM	0.1712 mL	0.8562 mL	1.7125 mL
50 mM	0.0342 mL	0.1712 mL	0.3425 mL

Please select the appropriate solvent to prepare the stock solution, according to the solubility of the product in different solvents. Please use it as soon as possible.

Note: The dilution table applies only to solid products. For liquid products, please calculate the stock solution based on the stated concentration and/or density.

**Inhibitor · Natural Compounds · Compound Libraries · Recombinant Proteins**

This product is for Research Use Only · Not for Human or Veterinary or Therapeutic Use

Tel:781-999-4286 E\_mail:info@targetmol.com Address:34 Washington Street,Wellesley Hills,MA 02481