

(R)-KMH-233

## Chemical Properties

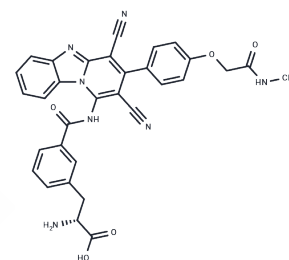
CAS No. : 2994330-89-9

Formula: C32H25N7O5

Molecular Weight: 587.58

Storage: Powder: -20°C for 3 years | In solvent: -80°C for 1 year

Actual storage temperature shall be subject to the COA.



## Biological Description

Description	(R)-KMH-233 is an isomer of KMH-233, which can serve as a reference compound in experiments. KMH-233 functions as a potent, reversible, and selective inhibitor of L-type amino acid transporter 1 (LAT1), effectively hindering the uptake of LAT1 substrate, L-leucine (IC <sub>50</sub> =18 μM), and also inhibiting cell growth. Even at a low concentration of 25 μM, KMH-233 significantly enhances the efficacy of Bestatin and cisplatin.
Targets(IC <sub>50</sub> )	ASCT

## Preparing Stock Solutions

	1mg	5mg	10mg
1 mM	1.7019 mL	8.5095 mL	17.019 mL
5 mM	0.3404 mL	1.7019 mL	3.4038 mL
10 mM	0.1702 mL	0.8509 mL	1.7019 mL
50 mM	0.034 mL	0.1702 mL	0.3404 mL

Please select the appropriate solvent to prepare the stock solution, according to the solubility of the product in different solvents. Please use it as soon as possible.

Note: The dilution table applies only to solid products. For liquid products, please calculate the stock solution based on the stated concentration and/or density.

Inhibitor · Natural Compounds · Compound Libraries · Recombinant Proteins

This product is for Research Use Only · Not for Human or Veterinary or Therapeutic Use

Tel:781-999-4286

E\_mail:info@targetmol.com

Address:34 Washington Street,Wellesley Hills,MA 02481