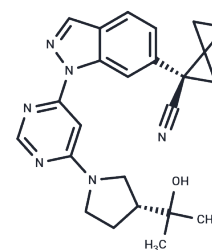


## (R,R)-LRRK2-IN-7

## Chemical Properties

|                   |   |
|-------------------|---|
| CAS No. :         | 2307277-92-3  |
| Formula:          | C <sub>24</sub> H <sub>26</sub> N <sub>6</sub> O  |
| Molecular Weight: | 414.50  |
| Storage:          | Powder: -20°C for 3 years   In solvent: -80°C for 1 year<br>Actual storage temperature shall be subject to the COA. |



## Biological Description

|                            |  |
|----------------------------|--|
| Description                | (R,R)-LRRK2-IN-7 is an isomer of LRRK2-IN-7, a potent and selective LRRK2 kinase inhibitor with CNS penetrance. It exhibits an IC <sub>50</sub> of 0.9 nM and demonstrates over 1000-fold selectivity compared to other kinases, ion channels, and CYP enzymes.  |
| Targets(IC <sub>50</sub> ) | LRRK2  |
| In vitro                   | LRRK2-IN-7 (compound 25) is both a substrate for Breast Cancer Resistance Protein (BCRP) in mice and humans and an effective human BCRP inhibitor with a BCRP IC <sub>50</sub> of 0.12 μM.   |
| In vivo                    | In a 7-day dose-limiting toxicity study on rats, LRRK2-IN-7 (compound 25) was well tolerated at doses up to 100 mg/kg administered once daily (AUC <sub>tot</sub> = 330 μM·h). During an acute (2-hour) PK/PD study in rats, LRRK2-IN-7 (compound 25) demonstrated a dose-dependent reduction of LRRK2 pS935 in the rat striatum, with an EC <sub>50</sub> of 0.18 |

## Preparing Stock Solutions

|       | 1mg       | 5mg        | 10mg       |
|-------|-----------|------------|------------|
| 1 mM  | 2.4125 mL | 12.0627 mL | 24.1255 mL |
| 5 mM  | 0.4825 mL | 2.4125 mL  | 4.8251 mL  |
| 10 mM | 0.2413 mL | 1.2063 mL  | 2.4125 mL  |
| 50 mM | 0.0483 mL | 0.2413 mL  | 0.4825 mL  |

Please select the appropriate solvent to prepare the stock solution, according to the solubility of the product in different solvents. Please use it as soon as possible.

Note: The dilution table applies only to solid products. For liquid products, please calculate the stock solution based on the stated concentration and/or density.

**Inhibitor · Natural Compounds · Compound Libraries · Recombinant Proteins**

This product is for Research Use Only · Not for Human or Veterinary or Therapeutic Use

Tel: 781-999-4286 E\_mail: info@targetmol.com Address: 34 Washington Street, Wellesley Hills, MA 02481