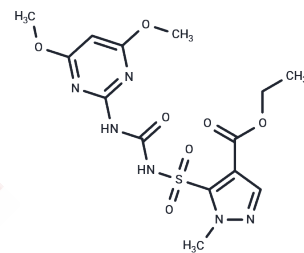


Pyrazosulfuron-ethyl

Chemical Properties

| | |
|-------------------|--|
| CAS No. : | 93697-74-6 |
| Formula: | C ₁₄ H ₁₈ N ₆ O ₇ S |
| Molecular Weight: | 414.39 |
| Storage: | Keep away from moisture Powder: -20°C for 3 years <small>Actual storage temperature shall be subject to the COA.</small> |



Biological Description

| | |
|---------------|---|
| Description | Pyrazosulfuron-ethyl a sulfonylurea herbicide for the control of broadleaf weeds, grasses and sedges in rice, acts by inhibiting ALS (acetolactate synthase). |
| Targets(IC50) | Others |

Solubility Information

| | |
|------------|---|
| Solubility | THF: 20 mg/mL (48.26 mM),Sonication is recommended.(DMSO can inactivate Pyrazosulfuron-ethyl's activity.) Acetone: 4 mg/mL (9.65 mM),Sonication is recommended.(DMSO can inactivate Pyrazosulfuron-ethyl's activity.) (< 1 mg/ml refers to the product slightly soluble or insoluble) |
|------------|---|

Preparing Stock Solutions

| | 1mg | 5mg | 10mg |
|-------|-----------|------------|------------|
| 1 mM | 2.4132 mL | 12.0659 mL | 24.1319 mL |
| 5 mM | 0.4826 mL | 2.4132 mL | 4.8264 mL |
| 10 mM | 0.2413 mL | 1.2066 mL | 2.4132 mL |
| 50 mM | 0.0483 mL | 0.2413 mL | 0.4826 mL |

Please select the appropriate solvent to prepare the stock solution, according to the solubility of the product in different solvents. Please use it as soon as possible.

Note: The dilution table applies only to solid products. For liquid products, please calculate the stock solution based on the stated concentration and/or density.

Reference

Luo XW, et al. Adaptation mechanism and tolerance of *Rhodospseudomonas palustris* PSB-S under pyrazosulfuron-ethyl stress. *BMC Microbiol.* 2018;18(1):207. Published 2018 Dec 7.

Inhibitor · Natural Compounds · Compound Libraries · Recombinant Proteins

This product is for Research Use Only · Not for Human or Veterinary or Therapeutic Use

Tel:781-999-4286 E_mail:info@targetmol.com Address:34 Washington Street,Wellesley Hills,MA 02481