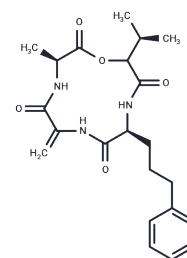


AM Toxin II

Chemical Properties

CAS No. :	56072-96-9
Formula:	C ₂₂ H ₂₉ N ₃ O ₅
Molecular Weight:	415.49
Storage:	Powder: -20°C for 3 years In solvent: -80°C for 1 year Actual storage temperature shall be subject to the COA.



Biological Description

Description	AM Toxin II is a Cyclic tetrapeptide isolated from <i>Alternaria mali</i> .
Targets(IC50)	Others

Preparing Stock Solutions

	1mg	5mg	10mg
1 mM	2.4068 mL	12.034 mL	24.068 mL
5 mM	0.4814 mL	2.4068 mL	4.8136 mL
10 mM	0.2407 mL	1.2034 mL	2.4068 mL
50 mM	0.0481 mL	0.2407 mL	0.4814 mL

Please select the appropriate solvent to prepare the stock solution, according to the solubility of the product in different solvents. Please use it as soon as possible.

Note: The dilution table applies only to solid products. For liquid products, please calculate the stock solution based on the stated concentration and/or density.

Reference

- Johnson RD, Johnson L, Itoh Y, Kodama M, Otani H, Kohmoto K. Cloning and characterization of a cyclic peptide synthetase gene from *Alternaria alternata* apple pathotype whose product is involved in AM-toxin synthesis and pathogenicity. *Mol Plant Microbe Interact.* 2000 Jul;13(7):742-53. PubMed PMID: 10875335.
- Ueda K, Waki M, Izumiya N. Cyclic peptides. XXVI. Synthesis of AM-toxin II analogs by cyclization through ester bond formation. *Int J Pept Protein Res.* 1987 Jul;30(1):33-9. PubMed PMID: 3667077.
- Noda K, Shibata Y, Gross E, Shimohigashi Y, Izumiya N. Cyclic peptides. XI. Synthesis of AM-toxin analogs by intramolecular condensation of pyruvyl-tripeptide amides. *Int J Pept Protein Res.* 1981 Nov;18(5):423-9. PubMed PMID: 7341525.
- Izumiya N. Chemical syntheses of biologically active cyclic peptides in the light of known biosynthetic pathways. *Biochem Soc Trans.* 1980 Dec;8(6):748-9. PubMed PMID: 6161852.

Inhibitor · Natural Compounds · Compound Libraries · Recombinant Proteins

This product is for Research Use Only · Not for Human or Veterinary or Therapeutic Use

Tel:781-999-4286 E_mail:info@targetmol.com Address:34 Washington Street,Wellesley Hills,MA 02481