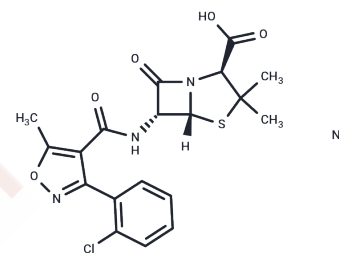


Cloxacillin Sodium

Chemical Properties

CAS No. :	642-78-4
Formula:	C ₁₉ H ₁₇ ClN ₃ NaO ₅ S
Molecular Weight:	457.86
Storage:	Powder: -20°C for 3 years In solvent: -80°C for 1 year Actual storage temperature shall be subject to the COA.



Biological Description

Description	Cloxacillin Sodium, a chlorinated derivative of Oxacillin, is a semi-synthetic antibiotic. Cloxacillin is used for the treatment of infections caused by species of staphylococci which produce beta-lactamase.
Targets(IC50)	Others,Antibacterial,Antibiotic

Solubility Information

Solubility	DMSO: Soluble, (< 1 mg/ml refers to the product slightly soluble or insoluble)
------------	--

Preparing Stock Solutions

	1mg	5mg	10mg
1 mM	2.1841 mL	10.9204 mL	21.8407 mL
5 mM	0.4368 mL	2.1841 mL	4.3681 mL
10 mM	0.2184 mL	1.092 mL	2.1841 mL
50 mM	0.0437 mL	0.2184 mL	0.4368 mL

Please select the appropriate solvent to prepare the stock solution, according to the solubility of the product in different solvents. Please use it as soon as possible.

Note: The dilution table applies only to solid products. For liquid products, please calculate the stock solution based on the stated concentration and/or density.

Reference

El Haj C, Murillo O, Ribera A, Vivas M, Garcia-Somoza D, Tubau F, Cabo J, Ariza J. Comparative efficacies of cloxacillin-daptomycin and the standard cloxacillin-rifampin therapies against an experimental foreign-body infection by methicillin-susceptible *Staphylococcus aureus*. *Antimicrob Agents Chemother*. 2014 Sep;58(9):5576-80. doi: 10.1128/AAC.02681-14. Epub 2014 Jun 23. Erratum in: *Antimicrob Agents Chemother*. 2014 Nov;58(11):7023. PubMed PMID: 24957833; PubMed Central PMCID: PMC4135877.

Inhibitor · Natural Compounds · Compound Libraries · Recombinant Proteins

This product is for Research Use Only · Not for Human or Veterinary or Therapeutic Use

Tel:781-999-4286 E_mail:info@targetmol.com Address:34 Washington Street,Wellesley Hills,MA 02481