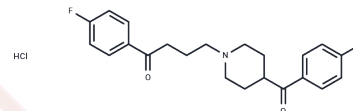


Lenperone HCl

Chemical Properties

CAS No. :	24677-86-9
Formula:	C ₂₂ H ₂₄ ClF ₂ NO ₂
Molecular Weight:	407.88
Storage:	Powder: -20°C for 3 years In solvent: -80°C for 1 year Actual storage temperature shall be subject to the COA.



Biological Description

Description	Lenperone HCl is a dopamine antagonist and an antipsychotic agent.
Targets(IC50)	Others,Dopamine Receptor

Preparing Stock Solutions

	1mg	5mg	10mg
1 mM	2.4517 mL	12.2585 mL	24.517 mL
5 mM	0.4903 mL	2.4517 mL	4.9034 mL
10 mM	0.2452 mL	1.2259 mL	2.4517 mL
50 mM	0.049 mL	0.2452 mL	0.4903 mL

Please select the appropriate solvent to prepare the stock solution, according to the solubility of the product in different solvents. Please use it as soon as possible.

Note: The dilution table applies only to solid products. For liquid products, please calculate the stock solution based on the stated concentration and/or density.

Reference

- Liu J, Hu KF, Qu JP, Kang YB. Organopromoted Selectivity-Switchable Synthesis of Polyketones. *Org Lett*. 2017 Oct 20;19(20):5593-5596. doi: 10.1021/acs.orglett.7b02731. Epub 2017 Oct 5. PubMed PMID: 28981291.
- Beaver BV. Animal behavior case of the month. Cat with 7-week history of spraying urine and defecating in house. *J Am Vet Med Assoc*. 1994 Jan 1;204(1):53-4. PubMed PMID: 7907322.
- Chiou GC, Chen YJ. Improvement of ocular blood flow with dopamine antagonists on ocular-hypertensive rabbit eyes. *Zhongguo Yao Li Xue Bao*. 1992 Nov;13(6):481-4. PubMed PMID: 1302433.
- Sato F, Owen M, Matthes R, Sato K, Gisolfi CV. Functional and morphological changes in the eccrine sweat gland with heat acclimation. *J Appl Physiol* (1985). 1990 Jul;69(1):232-6. PubMed PMID: 2203723.

Inhibitor · Natural Compounds · Compound Libraries · Recombinant Proteins

This product is for Research Use Only · Not for Human or Veterinary or Therapeutic Use

Tel:781-999-4286 E_mail:info@targetmol.com Address:34 Washington Street,Wellesley Hills,MA 02481