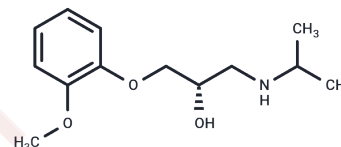


Levomoprolol

Chemical Properties

CAS No. :	77164-20-6
Formula:	C13H21NO3
Molecular Weight:	239.31
Storage:	Powder: -20°C for 3 years In solvent: -80°C for 1 year Actual storage temperature shall be subject to the COA.



Biological Description

Description	Levomoprolol, (S)-enantiomer of the moprolois, is a beta adrenergic antagonist.
Targets(IC50)	Others,Adrenergic Receptor

Preparing Stock Solutions

	1mg	5mg	10mg
1 mM	4.1787 mL	20.8934 mL	41.7868 mL
5 mM	0.8357 mL	4.1787 mL	8.3574 mL
10 mM	0.4179 mL	2.0893 mL	4.1787 mL
50 mM	0.0836 mL	0.4179 mL	0.8357 mL

Please select the appropriate solvent to prepare the stock solution, according to the solubility of the product in different solvents. Please use it as soon as possible.

Note: The dilution table applies only to solid products. For liquid products, please calculate the stock solution based on the stated concentration and/or density.

Reference

- Ghosh S, Bhaumik J, Banoth L, Banesh S, Banerjee UC. Chemoenzymatic Route for the Synthesis of (S)-Moprolol, a Potential β -Blocker. *Chirality*. 2016 Apr;28(4):313-8. doi: 10.1002/chir.22574. Epub 2016 Jan 28. PubMed PMID: 26821612.
- Gianesello V, Brenn E, Figini G, Gazzaniga A. Determination by coupled high-performance liquid chromatography-gas chromatography of the beta-blocker levomoprolol in plasma following ophthalmic administration. *J Chromatogr*. 1989 Jul 7;473(2):343-52. PubMed PMID: 2570078.
- Pecori-Giraldi J, Virno M, Ciarnella A, Taverniti L. [The beta-blocker levomoprolol in the treatment of glaucoma]. *Bull Mem Soc Fr Ophtalmol*. 1985;96:433-6. French. PubMed PMID: 2861871.
- Santambrogio R, Opocher E, Galeotti F, Montorsi M, Cucchiario G, Gagliano G, Spina GP. [The hemodynamic effects on the portal system of levomoprolol and propranolol in rats with an enhanced adrenergic tonus]. *Minerva Med*. 1989 Aug;80(8):949-51. Italian. PubMed PMID: 2571957.

Inhibitor · Natural Compounds · Compound Libraries · Recombinant Proteins

This product is for Research Use Only · Not for Human or Veterinary or Therapeutic Use

Tel:781-999-4286 E_mail:info@targetmol.com Address:34 Washington Street,Wellesley Hills,MA 02481