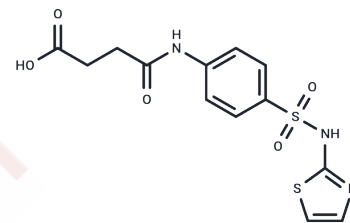


## Succinylsulfathiazole

## Chemical Properties

CAS No. :	116-43-8
Formula:	C <sub>13</sub> H <sub>13</sub> N <sub>3</sub> O <sub>5</sub> S <sub>2</sub>
Molecular Weight:	355.39
Storage:	Powder: -20°C for 3 years   In solvent: -80°C for 1 year Actual storage temperature shall be subject to the COA.



## Biological Description

Description	Succinylsulfathiazole (Succinylsulphathiazole) is a sulfonamide. An ultra long-acting drug.
Targets(IC50)	Antibacterial,Antibiotic,Autophagy

## Solubility Information

Solubility	DMSO: 60 mg/mL (168.83 mM),Sonication is recommended. H2O: < 1 mg/mL (insoluble or slightly soluble), Ethanol: < 1 mg/mL (insoluble or slightly soluble), (< 1 mg/ml refers to the product slightly soluble or insoluble)
In vivo Formulation	10% DMSO+40% PEG300+5% Tween 80+45% Saline: 2 mg/mL (5.63 mM),Sonication is recommended. <i>Please add the solvents sequentially, clarifying the solution as much as possible before adding the next one. Dissolve by heating and/or sonication if necessary. Working solution is recommended to be prepared and used immediately. The formulation provided above is for reference purposes only. In vivo formulations may vary and should be modified based on specific experimental conditions.</i>

## Preparing Stock Solutions

	1mg	5mg	10mg
1 mM	2.8138 mL	14.0691 mL	28.1381 mL
5 mM	0.5628 mL	2.8138 mL	5.6276 mL
10 mM	0.2814 mL	1.4069 mL	2.8138 mL
50 mM	0.0563 mL	0.2814 mL	0.5628 mL

Please select the appropriate solvent to prepare the stock solution, according to the solubility of the product in different solvents. Please use it as soon as possible.

Note: The dilution table applies only to solid products. For liquid products, please calculate the stock solution based on the stated concentration and/or density.

Reference

WRIGHT LD, SKEGGS HR. Am J Med Sci. 1946 Sep;212(3):312-4.

**Inhibitor · Natural Compounds · Compound Libraries · Recombinant Proteins**

This product is for Research Use Only · Not for Human or Veterinary or Therapeutic Use

Tel:781-999-4286 E\_mail:info@targetmol.com Address:34 Washington Street,Wellesley Hills,MA 02481