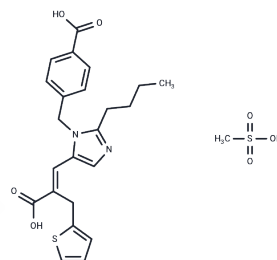


## Eprosartan Mesylate

## Chemical Properties

CAS No. :	144143-96-4
Formula:	C <sub>23</sub> H <sub>24</sub> N <sub>2</sub> O <sub>4</sub> S·CH <sub>4</sub> O <sub>3</sub> S
Molecular Weight:	520.62
Storage:	Powder: -20°C for 3 years   In solvent: -80°C for 1 year Actual storage temperature shall be subject to the COA.



## Biological Description

Description	Eprosartan Mesylate (SKF-108566) is a competitive and reversible Angiotensin II Receptor Blocker.
Targets(IC50)	RAAS
In vitro	In a study involving brain and spinal cord injured rats, Eprosartan (0.3 mg/kg i.v.) was observed to induce a hypertensive response following spinal cord stimulation.
In vivo	Eprosartan effectively inhibits [125I]-Angiotensin II in human tissues (adrenal cortex, liver, cloned AT1 receptors) with an IC50 range of 1.4-3.9 nM and in rat tissues (mesenteric artery, adrenal cortex, glomeruli) with an IC50 range of 1.5-9.2 nM. In isolated perfused proximal tubules of rabbits, Eprosartan (100 nM) completely blocks the isosmotic fluid absorption induced by Angiotensin II.

## Solubility Information

Solubility	Ethanol: 4 mg/mL (7.68 mM),Sonication is recommended. DMSO: 104 mg/mL (199.76 mM),Sonication is recommended. (< 1 mg/ml refers to the product slightly soluble or insoluble)
In vivo Formulation	10% DMSO+40% PEG300+5% Tween 80+45% Saline: 4 mg/mL (7.68 mM),Sonication is recommended. <i>Please add the solvents sequentially, clarifying the solution as much as possible before adding the next one. Dissolve by heating and/or sonication if necessary. Working solution is recommended to be prepared and used immediately. The formulation provided above is for reference purposes only. In vivo formulations may vary and should be modified based on specific experimental conditions.</i>

### Preparing Stock Solutions

---

	<b>1mg</b>	<b>5mg</b>	<b>10mg</b>
1 mM	1.9208 mL	9.6039 mL	19.2079 mL
5 mM	0.3842 mL	1.9208 mL	3.8416 mL
10 mM	0.1921 mL	0.9604 mL	1.9208 mL
50 mM	0.0384 mL	0.1921 mL	0.3842 mL

---

Please select the appropriate solvent to prepare the stock solution, according to the solubility of the product in different solvents. Please use it as soon as possible.

Note: The dilution table applies only to solid products. For liquid products, please calculate the stock solution based on the stated concentration and/or density.

#### Reference

Plosker GL, et al. *Drugs*, 2000, 60(1), 177-201.

Ohlstein EH, et al. *Pharmacology*, 1997, 55(5), 244-251.

**Inhibitor · Natural Compounds · Compound Libraries · Recombinant Proteins**

This product is for Research Use Only · Not for Human or Veterinary or Therapeutic Use

Tel:781-999-4286 E\_mail:info@targetmol.com Address:34 Washington Street,Wellesley Hills,MA 02481