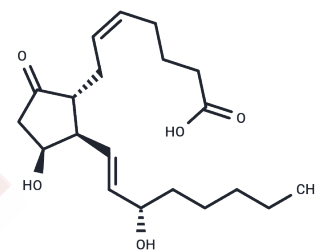


11 β -Prostaglandin E2

Chemical Properties

| | |
|-------------------|---|
| CAS No. : | 38310-90-6 |
| Formula: | C ₂₀ H ₃₂ O ₅ |
| Molecular Weight: | 352.47 |
| Storage: | Powder: -20°C for 3 years In solvent: -80°C for 1 year Actual storage temperature shall be subject to the COA. |



Biological Description

| | |
|---------------|---|
| Description | 11 β -PGE ₂ is the C-11 epimer of PGE ₂ . It is a moderate inhibitor of PGE ₂ binding to rat hypothalamic membranes with a K _i value of 53 nM.[1] 11 β -PGE ₂ also stimulates bone resorption in rats at concentrations of 10 ⁻⁸ to 10 ⁻⁶ M which is similar to PGE ₂ . 2 11 β -PGE ₂ inhibits PGE ₂ binding to the prostaglandin transporter protein with a K _i of 56 nM. [3] |
| Targets(IC50) | Others,Prostaglandin Receptor |

Solubility Information

| | |
|------------|---|
| Solubility | DMF: >100 mg/mL (from PGE ₂),Sonication is recommended. DMSO: >100 mg/mL (from PGE ₂),Sonication is recommended. Ethanol: >100 mg/mL (from PGE ₂),Sonication is recommended. (< 1 mg/ml refers to the product slightly soluble or insoluble) |
|------------|---|

Preparing Stock Solutions

| | 1mg | 5mg | 10mg |
|-------|-----------|------------|------------|
| 1 mM | 2.8371 mL | 14.1856 mL | 28.3712 mL |
| 5 mM | 0.5674 mL | 2.8371 mL | 5.6742 mL |
| 10 mM | 0.2837 mL | 1.4186 mL | 2.8371 mL |
| 50 mM | 0.0567 mL | 0.2837 mL | 0.5674 mL |

Please select the appropriate solvent to prepare the stock solution, according to the solubility of the product in different solvents. Please use it as soon as possible.

Note: The dilution table applies only to solid products. For liquid products, please calculate the stock solution based on the stated concentration and/or density.

Reference

- Dray, F., and Heaulme, M. Prostaglandins of the E series inhibit release of noradrenaline in rat hypothalamus by a mechanism unrelated to classical α_2 adrenergic presynaptic inhibition. *Neuropharmacology* 23, 457-462 (1984).
- Raisz, L.G., and Woodiel, F.N. Effect of alterations in the cyclopentane ring on bone resorptive activity of prostaglandin. *Prostaglandins* 37, 229-235 (1989).
- Itoh, S., Lu, R., Bao, Y., et al. Structural determinants of substrates for the prostaglandin transporter PGT. *Molecular Pharmacology* 50, 736-742 (1996).

Inhibitor · Natural Compounds · Compound Libraries · Recombinant Proteins

This product is for Research Use Only · Not for Human or Veterinary or Therapeutic Use

Tel: 781-999-4286 E_mail: info@targetmol.com Address: 34 Washington Street, Wellesley Hills, MA 02481