

Alverine citrate

Chemical Properties

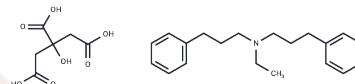
CAS No. : 5560-59-8

Formula: C₂₆H₃₅N₀₇

Molecular Weight: 473.57

Storage: Powder: -20°C for 3 years | In solvent: -80°C for 1 year

Actual storage temperature shall be subject to the COA.



Biological Description

Description	Alverine citrate (NSC 35459) is utilized in functional gastrointestinal disorders.
Targets(IC50)	5-HT Receptor
In vivo	Alverine citrate can inhibit calcium-dependent or independent excitability in neurons, as well as directly inactivate L-type calcium channels in smooth muscle cells.

Solubility Information

Solubility	DMSO: 142.8 mg/mL (301.54 mM),Sonication is recommended. Ethanol: < 1 mg/mL (insoluble or slightly soluble), (< 1 mg/ml refers to the product slightly soluble or insoluble)
In vivo Formulation	10% DMSO+40% PEG300+5% Tween 80+45% Saline: 2 mg/mL (4.22 mM),Sonication is recommended. <i>Please add the solvents sequentially, clarifying the solution as much as possible before adding the next one. Dissolve by heating and/or sonication if necessary. Working solution is recommended to be prepared and used immediately. The formulation provided above is for reference purposes only. In vivo formulations may vary and should be modified based on specific experimental conditions.</i>

Preparing Stock Solutions

	1mg	5mg	10mg
1 mM	2.1116 mL	10.5581 mL	21.1162 mL
5 mM	0.4223 mL	2.1116 mL	4.2232 mL
10 mM	0.2112 mL	1.0558 mL	2.1116 mL
50 mM	0.0422 mL	0.2112 mL	0.4223 mL

Please select the appropriate solvent to prepare the stock solution, according to the solubility of the product in different solvents. Please use it as soon as possible.

Note: The dilution table applies only to solid products. For liquid products, please calculate the stock solution based on the stated concentration and/or density.

Reference

Mitchell SA, et al, Aliment Pharmacol Ther, 2002, 16(6), 1187-1195.

Wittmann T, et al. Aliment Pharmacol Ther, 2010, 31(6), 615-624.

Inhibitor · Natural Compounds · Compound Libraries · Recombinant Proteins

This product is for Research Use Only · Not for Human or Veterinary or Therapeutic Use

Tel:781-999-4286 E_mail:info@targetmol.com Address:34 Washington Street,Wellesley Hills,MA 02481