

AChE-IN-21

Chemical Properties

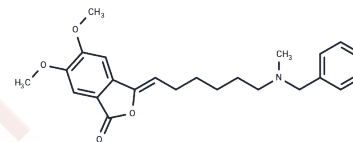
CAS No. : 2413656-04-7

Formula: C₂₄H₂₉NO₄

Molecular Weight: 395.49

Storage: Powder: -20°C for 3 years | In solvent: -80°C for 1 year

Actual storage temperature shall be subject to the COA.



Biological Description

Description	AChE-IN-21 (Compound I-8) is a highly potent and selective orally active inhibitor of acetylcholinesterase (AChE) with an inhibitory concentration (IC ₅₀) of 2.66 nM. It also demonstrates excellent in vitro blood-brain barrier (BBB) permeability [1].
Targets(IC ₅₀)	Others,Cholinesterase (ChE)
In vitro	Compound I-8 (AChE-IN-21) interacts with acetylcholinesterase (AChE) by attaching to both its catalytic active site and peripheral anionic site [1].
In vivo	AChE-IN-21 (Compound I-8) (0-25 mg/kg; i.g.), administered once daily for seven consecutive days, significantly mitigates memory impairment induced by scopolamine in Kunming mice (male and female, 18-22 g) [1]. Doses of 1.0, 5.0, and 25.0 mg/kg demonstrated a clear obstruction of memory deficits caused by scopolamine (2 mg/kg, i.p.) [1].

Preparing Stock Solutions

	1mg	5mg	10mg
1 mM	2.5285 mL	12.6425 mL	25.2851 mL
5 mM	0.5057 mL	2.5285 mL	5.057 mL
10 mM	0.2529 mL	1.2643 mL	2.5285 mL
50 mM	0.0506 mL	0.2529 mL	0.5057 mL

Please select the appropriate solvent to prepare the stock solution, according to the solubility of the product in different solvents. Please use it as soon as possible.

Note: The dilution table applies only to solid products. For liquid products, please calculate the stock solution based on the stated concentration and/or density.

Inhibitor · Natural Compounds · Compound Libraries · Recombinant Proteins

This product is for Research Use Only · Not for Human or Veterinary or Therapeutic Use

Tel:781-999-4286 E_mail:info@targetmol.com Address:34 Washington Street,Wellesley Hills,MA 02481