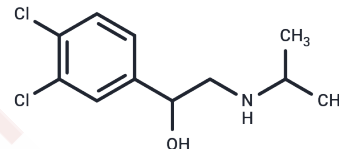


Dichloroisoproterenol

Chemical Properties

CAS No. :	59-61-0
Formula:	C ₁₁ H ₁₅ Cl ₂ NO
Molecular Weight:	248.15
Storage:	Powder: -20°C for 3 years In solvent: -80°C for 1 year Actual storage temperature shall be subject to the COA.



Biological Description

Description	Dichloroisoproterenol is also known as Dichloroisoprenaline (DCI), was the first beta blocker ever to be developed. It is non-selective for the β_1 -adrenergic and β_2 -adrenergic receptors. DCI has low potency and acts as a partial agonist/antagonist at these receptors. Dichloroisoprenaline is a racemic mixture of enantiomers.
Targets(IC50)	Others

Preparing Stock Solutions

	1mg	5mg	10mg
1 mM	4.0298 mL	20.1491 mL	40.2982 mL
5 mM	0.806 mL	4.0298 mL	8.0596 mL
10 mM	0.403 mL	2.0149 mL	4.0298 mL
50 mM	0.0806 mL	0.403 mL	0.806 mL

Please select the appropriate solvent to prepare the stock solution, according to the solubility of the product in different solvents. Please use it as soon as possible.

Note: The dilution table applies only to solid products. For liquid products, please calculate the stock solution based on the stated concentration and/or density.

Inhibitor · Natural Compounds · Compound Libraries · Recombinant Proteins

This product is for Research Use Only · Not for Human or Veterinary or Therapeutic Use

Tel:781-999-4286 E_mail:info@targetmol.com Address:34 Washington Street,Wellesley Hills,MA 02481