

## 1S-LSD

## Chemical Properties

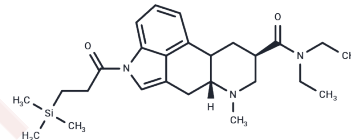
CAS No. :

Formula: C<sub>26</sub>H<sub>39</sub>N<sub>3</sub>O<sub>2</sub>Si

Molecular Weight: 453.69

Storage: Powder: -20°C for 3 years | In solvent: -80°C for 1 year

Actual storage temperature shall be subject to the COA.



## Biological Description

Description	1S-LSD, a psychedelic compound, is an analogue of lysergic acid diethylamide (LSD).
Targets(IC50)	Others

## Preparing Stock Solutions

	1mg	5mg	10mg
1 mM	2.2041 mL	11.0207 mL	22.0415 mL
5 mM	0.4408 mL	2.2041 mL	4.4083 mL
10 mM	0.2204 mL	1.1021 mL	2.2041 mL
50 mM	0.0441 mL	0.2204 mL	0.4408 mL

Please select the appropriate solvent to prepare the stock solution, according to the solubility of the product in different solvents. Please use it as soon as possible.

Note: The dilution table applies only to solid products. For liquid products, please calculate the stock solution based on the stated concentration and/or density.

Inhibitor · Natural Compounds · Compound Libraries · Recombinant Proteins

This product is for Research Use Only · Not for Human or Veterinary or Therapeutic Use

Tel:781-999-4286 E\_mail:info@targetmol.com Address:34 Washington Street,Wellesley Hills,MA 02481