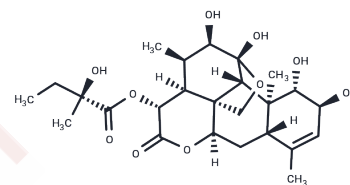


Glaucarubin

Chemical Properties

CAS No. :	1448-23-3
Formula:	C ₂₅ H ₃₆ O ₁₀
Molecular Weight:	496.55
Storage:	Powder: -20°C for 3 years In solvent: -80°C for 1 year Actual storage temperature shall be subject to the COA.



Biological Description

Description	Glaucarubin is a bitter lactone naturally found in the fruits of Simaruba glauca. It is employed as an anti-amebic agent in research focused on amebiasis. The compound exhibits good tolerability, with a median lethal dose (LD ₅₀) of 1,600 mg/kg in mice and 6,400 mg/kg in rats.
Targets(IC ₅₀)	Parasite

Preparing Stock Solutions

	1mg	5mg	10mg
1 mM	2.0139 mL	10.0695 mL	20.139 mL
5 mM	0.4028 mL	2.0139 mL	4.0278 mL
10 mM	0.2014 mL	1.0069 mL	2.0139 mL
50 mM	0.0403 mL	0.2014 mL	0.4028 mL

Please select the appropriate solvent to prepare the stock solution, according to the solubility of the product in different solvents. Please use it as soon as possible.

Note: The dilution table applies only to solid products. For liquid products, please calculate the stock solution based on the stated concentration and/or density.

Inhibitor · Natural Compounds · Compound Libraries · Recombinant Proteins

This product is for Research Use Only · Not for Human or Veterinary or Therapeutic Use

Tel:781-999-4286 E_mail:info@targetmol.com Address:34 Washington Street,Wellesley Hills,MA 02481