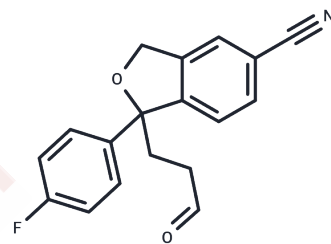


CIT-ALD

Chemical Properties

CAS No. :	211800-31-6
Formula:	C ₁₈ H ₁₄ FNO ₂
Molecular Weight:	295.31
Storage:	Powder: -20°C for 3 years In solvent: -80°C for 1 year Actual storage temperature shall be subject to the COA.



Biological Description

Description	CIT-ALD is an aldehyde intermediate formed during the metabolism of Citalopram. It has potential applications in the research of neurological disorders.
Targets(IC50)	Drug Metabolite

Preparing Stock Solutions

	1mg	5mg	10mg
1 mM	3.3863 mL	16.9314 mL	33.8627 mL
5 mM	0.6773 mL	3.3863 mL	6.7725 mL
10 mM	0.3386 mL	1.6931 mL	3.3863 mL
50 mM	0.0677 mL	0.3386 mL	0.6773 mL

Please select the appropriate solvent to prepare the stock solution, according to the solubility of the product in different solvents. Please use it as soon as possible.

Note: The dilution table applies only to solid products. For liquid products, please calculate the stock solution based on the stated concentration and/or density.

Inhibitor · Natural Compounds · Compound Libraries · Recombinant Proteins

This product is for Research Use Only · Not for Human or Veterinary or Therapeutic Use

Tel: 781-999-4286 E_mail: info@targetmol.com Address: 34 Washington Street, Wellesley Hills, MA 02481