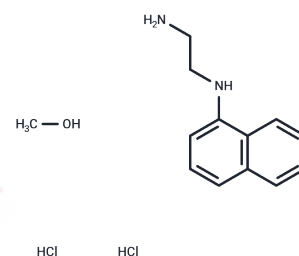


N-(1-Naphthyl)ethylenediamine dihydrochloride monomethanolate

Chemical Properties

CAS No. :	1357471-44-3
Formula:	C ₁₃ H ₂₀ Cl ₂ N ₂ O
Molecular Weight:	291.22
Storage:	Powder: -20°C for 3 years In solvent: -80°C for 1 year Actual storage temperature shall be subject to the COA.



Biological Description

Description	N-(1-Naphthyl)ethylenediamine dihydrochloride monomethanolate is a reagent commonly used in spectrophotometry for the determination of nitrites and nitrates.
Targets(IC50)	Others

Preparing Stock Solutions

	1mg	5mg	10mg
1 mM	3.4338 mL	17.1692 mL	34.3383 mL
5 mM	0.6868 mL	3.4338 mL	6.8677 mL
10 mM	0.3434 mL	1.7169 mL	3.4338 mL
50 mM	0.0687 mL	0.3434 mL	0.6868 mL

Please select the appropriate solvent to prepare the stock solution, according to the solubility of the product in different solvents. Please use it as soon as possible.

Note: The dilution table applies only to solid products. For liquid products, please calculate the stock solution based on the stated concentration and/or density.

Inhibitor · Natural Compounds · Compound Libraries · Recombinant Proteins

This product is for Research Use Only · Not for Human or Veterinary or Therapeutic Use

Tel: 781-999-4286 E_mail: info@targetmol.com Address: 34 Washington Street, Wellesley Hills, MA 02481