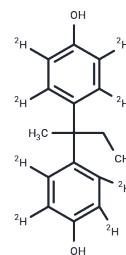


Bisphenol B-D8

Chemical Properties

CAS No. : 2469735-90-6
 Formula: C₁₆H₁₀D₈O₂
 Molecular Weight: 250.36
 Storage: Powder: -20°C for 3 years | In solvent: -80°C for 1 year
Actual storage temperature shall be subject to the COA.



Biological Description

Description	Bisphenol B-D8 isphenol B-D8 is the deuterated form of Bisphenol B, which is structurally similar to Bisphenol A. Bisphenol A is known as an endocrine disrupting chemical (EDC). Additionally, Bisphenol B (T5624) exhibits endocrine-disrupting or other harmful effects in animal models.
Targets(IC50)	Endogenous Metabolite

Preparing Stock Solutions

	1mg	5mg	10mg
1 mM	3.9942 mL	19.9712 mL	39.9425 mL
5 mM	0.7988 mL	3.9942 mL	7.9885 mL
10 mM	0.3994 mL	1.9971 mL	3.9942 mL
50 mM	0.0799 mL	0.3994 mL	0.7988 mL

Please select the appropriate solvent to prepare the stock solution, according to the solubility of the product in different solvents. Please use it as soon as possible.

Note: The dilution table applies only to solid products. For liquid products, please calculate the stock solution based on the stated concentration and/or density.

Inhibitor · Natural Compounds · Compound Libraries · Recombinant Proteins

This product is for Research Use Only · Not for Human or Veterinary or Therapeutic Use

Tel:781-999-4286 E_mail:info@targetmol.com Address:34 Washington Street,Wellesley Hills,MA 02481