

$\Delta^8$ -cis-iso-THC

## Chemical Properties

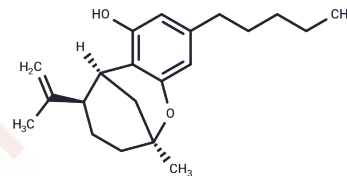
CAS No. : 3034057-47-8

Formula: C<sub>21</sub>H<sub>30</sub>O<sub>2</sub>

Molecular Weight: 314.46

Storage: Powder: -20°C for 3 years | In solvent: -80°C for 1 year

Actual storage temperature shall be subject to the COA.



## Biological Description

Description	$\Delta^8$ -cis-iso-THC has a structure similar to that of known phytocannabinoids. $\Delta^8$ -cis-iso-THC may occur as an impurity during the synthesis of $\Delta^8$ -THC.
Targets(IC50)	Others

## Preparing Stock Solutions

	1mg	5mg	10mg
1 mM	3.1801 mL	15.9003 mL	31.8005 mL
5 mM	0.636 mL	3.1801 mL	6.3601 mL
10 mM	0.318 mL	1.590 mL	3.1801 mL
50 mM	0.0636 mL	0.318 mL	0.636 mL

Please select the appropriate solvent to prepare the stock solution, according to the solubility of the product in different solvents. Please use it as soon as possible.

Note: The dilution table applies only to solid products. For liquid products, please calculate the stock solution based on the stated concentration and/or density.

Inhibitor · Natural Compounds · Compound Libraries · Recombinant Proteins

This product is for Research Use Only · Not for Human or Veterinary or Therapeutic Use

Tel: 781-999-4286

E\_mail: info@targetmol.com

Address: 34 Washington Street, Wellesley Hills, MA 02481