

Kaurene

Chemical Properties

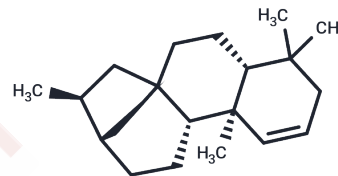
CAS No. : 34424-57-2

Formula: C₂₀H₃₂

Molecular Weight: 272.476

Storage: Powder: -20°C for 3 years | In solvent: -80°C for 1 year

Actual storage temperature shall be subject to the COA.



Biological Description

Description	Kaurene is a tetracyclic diterpene.
Targets(IC50)	Others

Preparing Stock Solutions

	1mg	5mg	10mg
1 mM	3.670 mL	18.350 mL	36.6999 mL
5 mM	0.734 mL	3.670 mL	7.340 mL
10 mM	0.367 mL	1.835 mL	3.670 mL
50 mM	0.0734 mL	0.367 mL	0.734 mL

Please select the appropriate solvent to prepare the stock solution, according to the solubility of the product in different solvents. Please use it as soon as possible.

Note: The dilution table applies only to solid products. For liquid products, please calculate the stock solution based on the stated concentration and/or density.

Reference

- Kong MK, Kang HJ, Kim JH, Oh SH, Lee PC. Metabolic engineering of the Stevia rebaudiana ent-kaurene biosynthetic pathway in recombinant Escherichia coli. *J Biotechnol.* 2015 Nov 20;214:95-102. doi: 10.1016/j.jbiotec.2015.09.016. Epub 2015 Sep 21. PubMed PMID: 26392384.
- Lu X, Hershey DM, Wang L, Bogdanove AJ, Peters RJ. An ent-kaurene-derived diterpenoid virulence factor from *Xanthomonas oryzae* pv. *oryzicola*. *New Phytol.* 2015 Apr;206(1):295-302. doi: 10.1111/nph.13187. Epub 2014 Nov 18. PubMed PMID: 25406717.
- Bustos-Brito C, Sánchez-Castellanos M, Esquivel B, Calderón JS, Calzada F, Yépez-Mulia L, Joseph-Nathan P, Cuevas G, Quijano L. ent-Kaurene Glycosides from *Ageratina cylindrica*. *J Nat Prod.* 2015 Nov 25;78(11):2580-7. doi: 10.1021/acs.jnatprod.5b00488. Epub 2015 Oct 30. PubMed PMID: 26517282.
- Miyazaki S, Toyoshima H, Natsume M, Nakajima M, Kawaide H. Blue-light irradiation up-regulates the ent-kaurene synthase gene and affects the avoidance response of protonemal growth in *Physcomitrella patens*. *Planta.* 2014 Jul;240(1):117-24. doi: 10.1007/s00425-014-2068-4. Epub 2014 Apr 9. PubMed PMID: 24715198.

Inhibitor · Natural Compounds · Compound Libraries · Recombinant Proteins

This product is for Research Use Only · Not for Human or Veterinary or Therapeutic Use

Tel:781-999-4286 E_mail:info@targetmol.com Address:34 Washington Street,Wellesley Hills,MA 02481