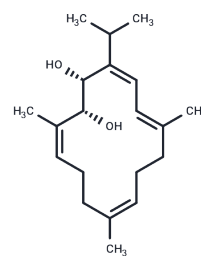


## Sarcophytol B

## Chemical Properties

CAS No. :	72629-68-6
Formula:	C <sub>20</sub> H <sub>32</sub> O <sub>2</sub>
Molecular Weight:	304.474
Storage:	Powder: -20°C for 3 years   In solvent: -80°C for 1 year Actual storage temperature shall be subject to the COA.



## Biological Description

Description	Sarcophytol B is a cembrane-type diterpene isolated from a soft coral, Sarcophyton glaucum.
Targets(IC50)	Others

## Preparing Stock Solutions

	1mg	5mg	10mg
1 mM	3.2844 mL	16.422 mL	32.844 mL
5 mM	0.6569 mL	3.2844 mL	6.5688 mL
10 mM	0.3284 mL	1.6422 mL	3.2844 mL
50 mM	0.0657 mL	0.3284 mL	0.6569 mL

Please select the appropriate solvent to prepare the stock solution, according to the solubility of the product in different solvents. Please use it as soon as possible.

Note: The dilution table applies only to solid products. For liquid products, please calculate the stock solution based on the stated concentration and/or density.

### Reference

Fujiki H, Suganuma M, Suguri H, Yoshizawa S, Takagi K, Kobayashi M. Sarcophytols A and B inhibit tumor promotion by teleocidin in two-stage carcinogenesis in mouse skin. *J Cancer Res Clin Oncol.* 1989;115(1):25-8. PubMed PMID: 2493457.

Wright AD, Nielson JL, Tapiolas DM, Liptrot CH, Motti CA. A great barrier reef *Sinularia* sp. yields two new cytotoxic diterpenes. *Mar Drugs.* 2012 Aug;10(8):1619-30. Epub 2012 Jul 31. PubMed PMID: 23015765; PubMed Central PMCID: PMC3447330.

Fujiki H, Suganuma M, Suguri H, Takagi K, Yoshizawa S, Ootsuyama A, Tanooka H, Okuda T, Kobayashi M, Sugimura T. New antitumor promoters: (-)-epigallocatechin gallate and sarcophytols A and B. *Basic Life Sci.* 1990; 52:205-12. PubMed PMID: 1970233.

Sawant SS, Sylvester PW, Avery MA, Desai P, Youssef DT, El Sayed KA. Bioactive rearranged and halogenated semisynthetic derivatives of the marine natural product sarcophine. *J Nat Prod.* 2004 Dec;67(12):2017-23. PubMed PMID: 15620244.

**Inhibitor · Natural Compounds · Compound Libraries · Recombinant Proteins**

This product is for Research Use Only · Not for Human or Veterinary or Therapeutic Use

Tel:781-999-4286 E\_mail:info@targetmol.com Address:34 Washington Street,Wellesley Hills,MA 02481