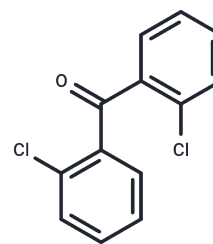


Bis (2-chlorophenyl)methanone

Chemical Properties

CAS No. :	5293-97-0
Formula:	C13H8Cl2O
Molecular Weight:	251.11
Storage:	Powder: -20°C for 3 years In solvent: -80°C for 1 year Actual storage temperature shall be subject to the COA.



Biological Description

Description	Bis (2-chlorophenyl)methanone is an organic compound belonging to the methanone (or benzophenone) family, featuring a central carbonyl functional group that is symmetrically bonded to two 2-chlorophenyl aromatic rings. Bis (2-chlorophenyl) methanone is often supplied as a high-purity reference chemical for various research and development applications, including custom organic synthesis and analytical method development.
Targets(IC50)	Others

Preparing Stock Solutions

	1mg	5mg	10mg
1 mM	3.9823 mL	19.9116 mL	39.8232 mL
5 mM	0.7965 mL	3.9823 mL	7.9646 mL
10 mM	0.3982 mL	1.9912 mL	3.9823 mL
50 mM	0.0796 mL	0.3982 mL	0.7965 mL

Please select the appropriate solvent to prepare the stock solution, according to the solubility of the product in different solvents. Please use it as soon as possible.

Note: The dilution table applies only to solid products. For liquid products, please calculate the stock solution based on the stated concentration and/or density.

Inhibitor · Natural Compounds · Compound Libraries · Recombinant Proteins

This product is for Research Use Only · Not for Human or Veterinary or Therapeutic Use

Tel: 781-999-4286 E_mail: info@targetmol.com Address: 34 Washington Street, Wellesley Hills, MA 02481