

AffiniPure F(ab')₂ Fragment Goat Anti-Rabbit IgG (H+L) Secondary Antibody-AF488

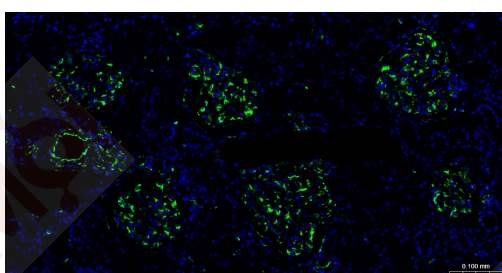
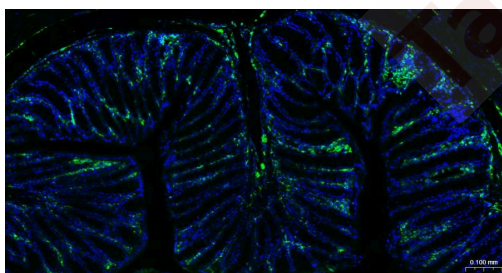
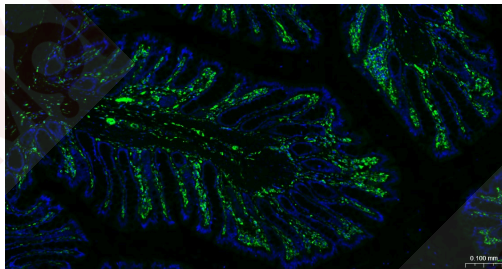
Product Details

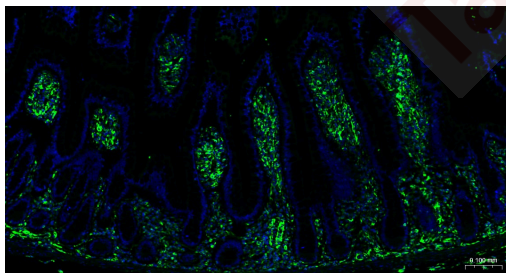
Reactivity: Rabbit

Applications

Verified Activity:

1. Paraformaldehyde-fixed, paraffin embedded Rat Colon; Antigen retrieval by boiling in sodium citrate buffer (pH6.0) for 15 min; Antibody incubation with Vimentin Polyclonal Antibody, Unconjugated at 1:200 overnight at 4°C. Followed by conjugated Goat Anti-Rabbit IgG antibody (green, TMAB-02062AF488), DAPI (blue) was used to stain the cell nuclei.
2. Paraformaldehyde-fixed, paraffin embedded Mouse Colon; Antigen retrieval by boiling in sodium citrate buffer (pH6.0) for 15 min; Antibody incubation with Vimentin Polyclonal Antibody, Unconjugated at 1:200 overnight at 4°C. Followed by conjugated Goat Anti-Rabbit IgG antibody (green, TMAB-02062AF488), DAPI (blue) was used to stain the cell nuclei.
3. Paraformaldehyde-fixed, paraffin embedded Human Kidney; Antigen retrieval by boiling in sodium citrate buffer (pH6.0) for 15 min; Antibody incubation with Vimentin Polyclonal Antibody, Unconjugated at 1:200 overnight at 4°C. Followed by conjugated Goat Anti-Rabbit IgG antibody (green, TMAB-02062AF488), DAPI (blue) was used to stain the cell nuclei.
4. Paraformaldehyde-fixed, paraffin embedded Human Small Intestine; Antigen retrieval by boiling in sodium citrate buffer (pH6.0) for 15 min; Antibody incubation with Vimentin Polyclonal Antibody, Unconjugated at 1:200 overnight at 4°C. Followed by conjugated Goat Anti-Rabbit IgG antibody (green, TMAB-02062AF488), DAPI (blue) was used to stain the cell nuclei.





Application: FCM,ICC/IF,IF

Recommended IF: 1:200-1000; ICC/IF: 1:100-1000; FCM: 1:100-1000

Properties

Stability & Storage: Store at -20°C or -80°C for 12 months. Avoid repeated freeze-thaw cycles.

Shipping: Shipping with blue ice.

Antigen Details

Synonyms: F(ab)₂ Fragment Goat Anti-Rabbit IgG H&L/BF488;BF488 AffiniPure F(ab')₂ Fragment Goat Anti-Rabbit IgG (H+L);F(ab')₂ Fragment Goat Anti-rabbit IgG H+L (AF488);F(ab)₂ Fragment Goat Anti-Rabbit IgG H&L (AF488)

Research Background

Target: Rabbit

Host: Goat

Antibody Format: F(ab') Fragment

Specificity: IgG (H+L)

Minimal Cross Reactivity: Human, Mouse, Rat Serum Proteins

Conjugate: Alexa Fluor 488 (Amax: 493 Emax: 519nm)

Product Category: F(ab') Fragment Affinity-Purified Antibodies

Dilution Range: 1:100-800 for most applications

Purity: The antibody was purified from antisera by a combination of pepsin digestion and immunoaffinity chromatography using antigens coupled to agarose beads. Fc fragments and whole IgG molecules have been removed.

Buffer: 0.01M TBS (pH7.4) with 1% BSA, 0.02% Proclin300 and 50% Glycerol.

Information:

Based on immunoelectrophoresis and/or ELISA, the antibody reacts with whole molecule rabbit IgG. It also reacts with the light chains of other rabbit immunoglobulins. No antibody was detected against non-immunoglobulin serum proteins. The antibody has been tested by ELISA and/or solid-phase adsorbed to ensure minimal cross-reaction with human, mouse and rat serum proteins, but it may cross-react with immunoglobulins from other species.

F(ab')₂ fragment antibodies are generated by pepsin digestion of whole IgG antibodies to remove most of the Fc region while leaving some of the hinge region. F(ab')₂ fragments have two antigen-binding Fab portions linked together by disulfide bonds and therefore they are divalent. The average molecular weight is about 110 kDa. They are used for specific applications, such as to avoid binding of secondary antibodies to live cells with Fc receptors or to Protein A or Protein G.

Inhibitor · Natural Compounds · Compound Libraries · Recombinant Proteins

This product is for Research Use Only · Not for Human or Veterinary or Therapeutic Use

Tel:781-999-4286 E_mail:info@targetmol.com Address:34 Washington Street,Wellesley Hills,MA 02481